

Table of Contents

1.3.3- CONSOLIDATED REPORT OF FIELD VISIT AND PHOTOS	2
1 Badami_Pattadkal 2017	3
2 Bagalkot Study Tour Report 2015	8
3 Bagalkot Study Tour Report 2019	14
4 Bagalkot Study Tour Report 2021	20
5 Bandiwade Study college report 2018	26
6 GEOLOGICAL STUDY TOUR REPORT AURANGABAD 2019	28
7 GEOLOGICAL STUDY TOUR REPORT KARWAR 2015	35
8 GEOLOGICAL STUDY TOUR REPORT KARWAR-ANKOLA 2019	42
9 gokakGudch_tourep 16	48
9.1 Geological structures seen during the field study	50
10 gokakGudch_tourep 17	53
10.1 Geological structures seen during the field study	55
11 gokakGudch_tourep 19	58
11.1 Geological structures seen during the field study	60
12 KARWAR-ANKOLA Study Tour 2021	63
13 Malvan report 2019	68
13.1 Geological and Geomorphological structures seen during the field study	71
14 Malvan report 2019	74
15 Pondichery report 2019	80
16 Rajasthan Study Tour report 2017	88
17 Ratnagiri report 2020	98
17.1 Geological and Geomorphological structures seen during the field study	101
18 Study tour photographs with caption	104
19 Ulavi report 2019	111
1.3.3_STUDY TOUR PHOTOS	116

Table of Contents

Badami_Pattadkal 2017	2
Bagalkot Study Tour Report 2015	7
Bagalkot Study Tour Report 2019	13
Bagalkot Study Tour Report 2021	19
Bandiwade Study college report 2018	25
GEOLOGICAL STUDY TOUR REPORT AURANGABAD 2019	27
GEOLOGICAL STUDY TOUR REPORT KARWAR 2015	34
GEOLOGICAL STUDY TOUR REPORT KARWAR-ANKOLA 2019	41
gokakGudch_tourep 16	47
1 Geological structures seen during the field study	49
gokakGudch_tourep 17	52
1 Geological structures seen during the field study	54
gokakGudch_tourep 19	57
1 Geological structures seen during the field study	59
KARWAR-ANKOLA Study Tour 2021	62
Malvan report 2019	67
1 Geological and Geomorphological structures seen during the field study	70
Malvan report 2019	73
Pondichery report 2019	79
Rajasthan Study Tour report 2017	87
Ratnagiri report 2020	97
1 Geological and Geomorphological structures seen during the field study	100
Study tour photographs with caption	103
Ulavi report 2019	110

**SKE SOCIETY'S
G.S.Sc. COLLEGE, BELGAUM**



REPORT OF
**GEOLOGICAL STUDY TOUR TO
BADAMI**

Date of visit Sunday, 1 October 2017

B.Sc. THIRD & FIFTH SEMESTER
GEOLOGY (OPTIONAL)



**SKE SOCIETY'S
G.S.Sc. COLLEGE, BELGAUM**

Department of Geology

CERTIFICATE

This is to certify that Mr/Miss. _____ of
B.Sc. III/V Semester with Geology as optional subject has attended the
Geological Study Tour to “**Badami**” on 1 October 2017.

Exam Seat No. _____

Date:

Head, Dept. of Geology

GSS COLLEGE, DEPARTMENT OF GEOLOGY
GEOLOGICAL STUDY TOUR TO ULAVI CAVES

STUDY TOUR REPORT

Date of visit 8th February 2018

(We started our journey at 8.0 am and returned at 10 pm)

We the B.Sc. II sem students of Geology Department, were taken to Ulavi caves as a part of curriculum. Ulavi is well known for the Channabasaveshwara temple. The place is known for its historical aspects. Geologically the area is well known for Karst topography (limestone caves) and huge rock cliffs. The rock formations are mainly of crystalline limestone with chert/silica bands. There are numerous caves carved out of cracks and chemical weathering due to water action, showing beautiful stalactites and stalagmites, which is a geologists and speleologists' paradise. We were taken to several of these caves and cliffs made of crystalline limestone. Mahamane Gavi, is located about 8km and is the farthest of the caves in the dense forest. Aakalu Gavi, is one of the famous, the limestone rock cliff here is about 800 ft tall and the cave is situated about 50 ft above the ground (Figure 1), and a ladder is kept to reach the cave. Here, one need to crawl through the narrow mouth of the cave. The beautiful stalactites are observed in this cave. The stalactites look like a cow's mamillary glands (Figure 2). The other cave, Vibhuti Mantapa, is at the ground level with a fairly large entrance, where in Stalagmite and the pillar (joining the stalactite and stalagmite) is seen (Figure 3).

Akka Nagamma cave is situated on the way to Akalgavi, where two entrances one goes steep below the underground, where the other is at shallow level. Here too beautiful stalactites (Figure 4) and beds formed due to leaching are seen.

All these caves show the effect of weathering by plants and water action on limestone.

We were shown sedimentary structures such as bedding, folding, differential weathering, elephant skin weathering (Figure 5), etc and the use of Brunton compass and GPS in the field.

Name:	Class: B.Sc. III/IV Sem
	Examination No.:
Signature and Name of the staff:	
Dr.P.T.Hanamgond	
Prof. S.S.Mense	

Field Photographs



Field Photographs showing Limestone Caves showing fold (A), stalactite structures (B-D) and opening formed due to weathering (E & F).

**SKE SOCIETY'S
G.S.Sc. COLLEGE, BELGAUM**



REPORT

**GEOLOGICAL STUDY TOUR TO
AN OPEN CAST LIMESTONE MINE IN BAGALKOT**

Date of visit 12th October 2013

B.Sc. THIRD SEMESTER

GEOLOGY (OPTIONAL)

**SKE SOCIETY'S
G.S.Sc. COLLEGE, BELGAUM**



Department of Geology

CERTIFICATE

This is to certify that Mr/Miss. _____ of B.Sc. III Semester with Geology as optional subject has attended the Geological Study Tour to **“Geological study tour to open cast Limestone mines in Lokapur”** on 11th September 2015.

Exam Seat No. _____

Date:

Head, Dept. of Geology

LOCATION AND ACCESSIBILITY

Lokapur in Bagalkot district is an important commercial centre for Limestone and Dolomite minerals. The National highway 13 from Hubli to Sholapur passes 10 Km. west of Bagalkot. Recently the railway route from Sholapur to Hubli has been converted to broad gauge too.

PHYSICAL FEATURES AND CLIMATE

It is learnt from the Mines and Geology Department reports that the area is a plain ground with general northerly slope. There are two parallel chains of bold ridges running in WNW-ESE direction on either side of Raichur Belgaum State highway. These ridges are comprised of low mounds with an average attitude of (1800' N 600 M) above M.S.L. The tallest mound of 2000' is situated NW of Bagalkot town. There are number of small seasonal streams draining into Ghataprabha river which flows E- W due north of Bagalkot town.

The vegetation in the area is not very conspicuous due to dry climate. The region is under arid and semi arid zone. The months of March to May are the hottest. This is followed by SW monsoon from the mid June to the end of September. December is the coldest period reading the lowest temperature drop of 14.8⁰ C. The highest temperature recorded is 43°C. The average annual rainfall is 570 MM.

The region is spread over by medium and deep black soil and red sandy soil derived from sandstones and shales. The average soil thickness is 1 to 1.5 mts.

It is reported that, the pioneering survey for limestones was conducted by Capt. Newbold in 1842- 45 in the Kaladagi basin.

GEOLOGY OF THE AREA

The geology of the area is quite well known World over for the Proterozoic sedimentary basins popularly known as “Kaladgi Formation”. These rocks are deposited in an extensive basin (including the areas of Belgaum, Dharwad, Bijapur, Bidar & Gulbarga districts) below sea level. The rocks are succeeding the Archaean rocks. The rocks are named after the village “Kaladgi” now in Bagalkot district. The Kaladgi rocks are separated from the underlying schistose and Granitic rocks of Archaean age by a profound unconformity “The Great Eparchaeon Unconformity” typically exposed near “Yellamma Gudda”. The Kaladgi rocks are least disturbed shallow marine sediments. These rock formations are covered by the Deccan Volcanic rocks in the northern part, which are of much younger period. The basin is believed to extend in a NW direction about 40-50 miles. The basin extends EW for nearly 500 km and is hidden beneath the Deccan Traps. The basin is located in the northern part of the Dharwar Craton, Karnataka. The principal rock types include- orthoquartzite, argillite, carbonates (including limestone & dolomite).

Stratigraphy: The Kaladgi has now been accorded a supergroup status consisting of a lower group for which the name Bagalkot Group has been given. The upper sequence is designated as the Badami Group. Following is the details of Bagalkot group.

BAGALKOT GROUP	Badami Group(285)	Katageri Limestone (150) Kerur Arenite (135)	Limestone, shale Conglomerate, arenite, shale
	Angular Unconformity		
	Intrusives: Quartz veins, pegmatite, dolerite dykes		
	Simikeri Subgroup (1150)	Hosakatti Argillite(700) Arlikatti Dolomite (130) Niralkerr Breccia (40) Kundargi Quartzite (280)	Argillite Dolomite, hematite bed Chert Breccia Conglomerate, quartzite, argillite
	Disconformity		
	Lokapur Sub-group (2750)	Yadahalli Argillite (60) Muddapur dolomite (5650) Chikshillikeri Limestone (800) Yargatti Argillite (720) Mahakut Breccia (130) Saundatti Quartzite (475)	Argillite Dolomite, Limestone, argillite Limestone, shale Argillite, dolomite Chert breccias Conglomerate, quartz, shale
	Nonconformity and angular Conformity		
	Gneisses/Granites and Schist Belts of Dharwar craton		

DISCRIPTION OF ROCK UNITS

The megascopic characters and mode of occurrence of different rock types encountered in the field are as follows:

Laterites: Along the highway, the laterites were observed, occurring as isolated hill caps representing the youngest among the succession, overlying the Kaladagi's. These laterites are ferruginous porous and highly altered formations owing to residual weathering. The extent of outcrops is less conspicuous.

Quartzites: The Quartzites occurs as prominent and well demarcated outcrops. These Quartzites range from pale gray to pinkish colored hard and compact coarse grained, highly jointed trending WNW-ESE with general southerly dip ranging from 50°-65°.

Conglomerates: The basal conglomerates lie immediately below Quartzites indicating a break in deposition. The siliceous matrix encloses ferruginous quartz pebbles, which are oval to sub oval shaped ranging in size from few centimeters to 2.3 inches.

High Calcium Limestone: Bluish Crystalline limestones occur parallel to the quartzites underlying conglomerate beds. These are of two types viz. bluish to bluish gray high calcium limestones and variegated limestone of various colors of bluish gray, green and pale pink linear bands. The general trend of the formation is similar to quartzites with southerly dip ranging from 35° to 65°. At places the trend changes to NNW-SSE with easterly dip of 15° to 20° signifying folded nature.

Dolomites: The dolomite occurrences are not very extensive but appear as isolated and scattered outcrops of varying dimensions associated with high calcium limestones. The bands are linear

and pale gray to ash gray hard and compact with typical elephant skin weathered outer surface. The trend is also variable due to flexibility resulting in folding and contortion into arcs. The general trend of the formation is WNW-ESE with low angle Easterly dip. The major joints are disposed at right angles to the strike direction.

Lime Kankar: Extensive Kankar deposits are not frequently seen in the area, however visible patches of Kankar are observed about 4 Km. north of Gaddanakere cross on Hubli-Sholapur roadside, south of Yedehalli village and around Kaladagi village.

Under the guidance of Shri. Narasimhamurthy, Mine Manager, Bagalkot, we visited two open cast mines (Photos A), wherein we were enlightened with mining types, mine planning, resource estimation, afforestation, benches, bench width, core drilling, blasting, ore transportation etc.

During the field visit we could observe various geological features such as weathering effect on dolomites giving rise to elephant skin weathering (Photo B), fold structures (Photo C & D), Stratification and dipping beds (E), leaching/dissolution effect and cave formation (F), and also learnt the drilling and grading techniques (G & H).

Acknowledgements:

We are grateful to Dr.P.T.Hanamgond & Miss. Manisha Dhuri of Geology department, for conducting this study tour. We thank Shri. G.S.Narasimhamurthy, Mine Manager, Bagalkot, for explaining us the mining techniques. We thank our Principal Prof.A.K.Mense, for allowing us to this study tour.

Reference

M.S.Anand, R.Srinivasiah and B.S.N.Shetty, 1999. Investigation for Limestone Dolomites in the Submersion Zone from Bagalkot to Kaladgi, Bagalkot District (Field Session 1980-81), Dept of Mines and Geology, Bangalore, No.310, 12p.

Name:	Class: B.Sc. III Semester
Examination No.:	
Signature and Name of the staff:	Dr.P.T.Hanamgond Miss.Manisha Dhuri

FIELD PHOTOGRAPHS



Description of field photos: 1. Quarry of Argillaceous rocks; 2. Panoramic view of the Limestone open cast mine at Shellikeri; 3. Drag fold structure of quartz vein; 4. Syncline fold structure at Shellikeri Limestone mine; 5. Dissolution structure in limestone; 6. Ferruginous leaching along bedding plane; 7. Core drilling in the mine; and 8. Banded Hematite Quartzite (BHQ) outcrop near Deshnur.

**SKE SOCIETY'S
G.S.Sc. COLLEGE, BELGAUM**



REPORT

**GEOLOGICAL STUDY TOUR TO
AN OPEN CAST DOLOMITE MINE AT NEELKERI, BAGALKOTE**

Date of visit 7th April 2019

B.Sc. SIXTH SEMESTER

GEOLOGY (OPTIONAL)



**SKE SOCIETY'S
G.S.Sc. COLLEGE, BELGAUM**



Department of Geology

CERTIFICATE

This is to certify that Mr/Miss. _____ of B.Sc. VI Semester with Geology as optional subject has attended the Geological Study Tour to **“Geological study tour to open cast Dolomite mines at Neelkeri, Bagalkote”** on 7th April 2019.

Exam Seat No. _____

Date:

Head, Dept. of Geology

LOCATION AND ACCESSIBILITY

Bagalkot district is an important commercial centre for Limestone and Dolomite minerals because of extensive carbonate deposits. The National highway 13 from Hubli to Sholapur passes 10 Km. west of Bagalkot. Recently the railway route from Sholapur to Hubli has been converted to broad gauge too.

PHYSICAL FEATURES AND CLIMATE

It is learnt from the Mines and Geology Department reports that the area is a plain land with general northerly slope. There are two parallel chains of bold ridges running in WNW-ESE direction on either side of Raichur Belgaum State highway. These ridges are comprised of low mounds with an average attitude of (1800' N 600 M) above M.S.L. The tallest mound of 2000' is situated NW of Bagalkot town. There are number of small seasonal streams draining into Ghataprabha River which flows E- W due north of Bagalkote town.

The vegetation in the area is not very conspicuous due to dry climate. The region is under arid and semi arid zone. The months of March to May are the hottest. This is followed by SW monsoon from the mid June to the end of September. December is the coldest period reading the lowest temperature drop of 14.8⁰ C. The highest temperature recorded is 43°C. The average annual rainfall is 570 MM.

The region is spread over by medium and deep black soil and red sandy soil derived from sandstones, limestone-dolomite and shales. The average soil thickness is 1 to 1.5 mts.

It is reported that, the pioneering survey for limestone-dolomite was conducted by Capt. Newbold in 1842- 45 in the Kaladagi basin.

GEOLOGY OF THE AREA

The geology of the area is quite well known World over for the Proterozoic sedimentary basins popularly known as “Kaladgi Formation”. These rocks are deposited in an extensive basin (including the areas of Belgaum, Dharwad, Bijapur, Bidar & Gulbarga districts) below sea level. The rocks are succeeding the Archaean rocks. The rocks are named after the village “Kaladgi” now in Bagalkot district. The Kaladgi rocks are separated from the underlying schistose and Granitic rocks of Archaean age by a profound unconformity “The Great Eparchaeon Unconformity” typically exposed near “Yellamma Gudda”. The Kaladgi rocks are least disturbed shallow marine sediments. These rock formations are covered by the Deccan Volcanic rocks in the northern part, which are of much younger period. The basin is believed to extend in a NW direction about 40-50 miles. The basin extends EW for nearly 500 km and is hidden beneath the Deccan Traps. The basin is located in the northern part of the Dharwar Craton, Karnataka. The principal rock types include- orthoquartzite, argillite, carbonates (including limestone & dolomite).

Stratigraphy: The Kaladgi has now been accorded a Supergroup status consisting of a lower group for which the name Bagalkot Group has been given. The upper sequence is designated as the Badami Group. Following is the details of Bagalkot Group.

BAGALKOT GROUP	Badami Group(285)	Katageri Limestone (150) Kerur Arenite (135)	Limestone, shale Conglomerate, arenite, shale
	Angular Unconformity		
	Intrusives: Quartz veins, pegmatite, dolerite dykes		
	Simikeri Subgroup (1150)	Hosakatti Argillite(700) Arlikatti Dolomite (130) Niralkeri Breccia (40) Kundargi Quartzite (280)	Argillite Dolomite, hematite bed Chert Breccia Conglomerate, quartzite, argillite
	Disconformity		
	Lokapur Sub-group (2750)	Yadahalli Argillite (60) Muddapur dolomite (5650) Chikshillikeri Limestone (800) Yargatti Argillite (720) Mahakut Breccia (130) Saundatti Quartzite (475)	Argillite Dolomite, Limestone, argillite Limestone, shale Argillite, dolomite Chert breccias Conglomerate, quartz, shale
	Nonconformity and angular Conformity		
	Gneisses/Granites and Schist Belts of Dharwar craton		

DISCRIPTION OF ROCK UNITS

The megascopic characters and mode of occurrence of different rock types encountered in the field are as follows:

Laterites: Along the highway, the laterites were observed, occurring as isolated hill caps representing the youngest among the succession, overlying the Kaladagi's. These laterites are ferruginous porous and highly altered formations owing to residual weathering. The extent of outcrops is less conspicuous.

Quartzites: The Quartzites occurs as prominent and well demarcated outcrops. These Quartzites range from pale gray to pinkish colored hard and compact coarse grained, highly jointed trending WNW-ESE with general southerly dip ranging from 50°-65°.

Conglomerates: The basal conglomerates lie immediately below Quartzites indicating a break in deposition. The siliceous matrix encloses ferruginous quartz pebbles, which are oval to sub oval shaped ranging in size from few centimeters to 2.3 inches.

High Calcium Limestone: Bluish Crystalline limestones occur parallel to the quartzites underlying conglomerate beds. These are of two types viz. bluish to bluish gray high calcium limestones and variegated limestone of various colors of bluish gray, green and pale pink linear bands. The general trend of the formation is similar to quartzites with southerly dip ranging from 35° to 65°. At places the trend changes to NNW-SSE with easterly dip of 15° to 20° signifying folded nature.

Dolomites: The dolomite occurrences are not very extensive but appear as isolated and scattered outcrops of varying dimensions associated with high calcium limestones. The bands are linear

and pale gray to ash gray hard and compact with typical elephant skin weathered outer surface. The trend is also variable due to flexibility resulting in folding and contortion into arcs. The general trend of the formation is WNW-ESE with low angle Easterly dip. The major joints are disposed at right angles to the strike direction. At Neelkeri mines, majority of the deposits are dolomite (Photos 1-5), at one mine the dolomite occurs with shale beds.

Lime Kankar: Extensive Kankar deposits are not frequently seen in the area, however visible patches of Kankar are observed about 4 Km. north of Gaddanakere cross on Hubli-Sholapur roadside, south of Yedehalli village and around Kaladagi village.

Stromatolite: Stromatolites are one of the first life existing on the earth mainly formed by the cyanobacteria (Photo 1). They are exposed along Yargatti-Gokak road about 2km from Yargatti.

We visited three open cast mines (Photos 2 - 5), wherein we were enlightened with mining types, mine planning, resource estimation, afforestation, benches, bench width, core drilling, blasting, ore transportation, mine closure, estimation of ore, uses etc.

During the field visit we could observe various geological features such as weathering effect on dolomites giving rise to elephant skin weathering (Photo 2), leaching/dissolution effect and cave formation (3), and fracture fill deposit with angular fragments (4). On the way to Bagalkote after Yargatti about few kilometers, we could see folded limestone deposit with quartz veins (Photo 6).

Acknowledgements:

We are grateful to Dr.P.T.Hanamgond, Head Department of Geology; Prof.Suraj Mense and Prof Yogesh Kutre of Geology department, for conducting this study tour. We thank Shri. Anil Hadagli, Mine owner, Bagalkote, for explaining us the mining techniques.

Reference

M.S.Anand, R.Srinivasiah and B.S.N.Shetty, 1999. Investigation for Limestone Dolomites in the Submersion Zone from Bagalkot to Kaladgi, Bagalkot District (Field Session 1980-81), Dept of Mines and Geology, Bangalore, No.310, 12p.

Name:	Class: B.Sc. VI Semester
Examination No.:	
Signature and Name of the staff:	Dr.P.T.Hanamgond Prof. Suraj S Mense Prof. Yogesh M Kutre

FIELD PHOTOGRAPHS



**SKE SOCIETY'S
G.S.Sc. COLLEGE, BELGAUM**



REPORT

**GEOLOGICAL STUDY TOUR TO
A SANDSTONE QUARRY NEAR MURADI, BAGALKOTE; AND AN OPEN CAST
LIMESTONE MINE AT LOKAPUR**

**The field visit was organized jointly with Mining Engineers' Association of India, Belgaum
Chapter as a MoU continuation activity**

Date of visit 31 January 2021

B.Sc. FIFTH SEMESTER

GEOLOGY (OPTIONAL)



**SKE SOCIETY'S
G.S.Sc. COLLEGE, BELGAUM**



Department of Geology

CERTIFICATE

This is to certify that Mr/Miss. _____ of B.Sc. V Semester with Geology as optional subject has attended the Geological Study Tour to **GEOLOGICAL STUDY TOUR TO A SANDSTONE QUARRY NEAR MURADI, BAGALKOTE; AND AN OPEN CAST LIMESTONE MINE AT LOKAPUR** on 31 January 2021.

Exam Seat No. _____

Date:

Head, Dept. of Geology

LOCATION AND ACCESSIBILITY

Bagalkot district is an important commercial centre for Limestone and Dolomite minerals because of extensive carbonate deposits. The area is also known for other building materials such as Sandstones, Shales, Quartzites etc. The National highway 13 from Hubli to Sholapur passes 10 Km. west of Bagalkot. Recently the railway route from Sholapur to Hubli has been converted to broad gauge too.

PHYSICAL FEATURES AND CLIMATE

It is learnt from the Mines and Geology Department reports that the area is a plain land with general northerly slope. There are two parallel chains of bold ridges running in WNW-ESE direction on either side of Raichur Belgaum State highway. These ridges are comprised of low mounds with an average attitude of (1800' N 600 M) above M.S.L. The tallest mound of 2000' is situated NW of Bagalkot town. There are number of small seasonal streams draining into Ghataprabha River which flows E- W due north of Bagalkote town.

The vegetation in the area is not very conspicuous due to dry climate. The region is under arid and semi arid zone. The months of March to May are the hottest. This is followed by SW monsoon from the mid June to the end of September. December is the coldest period reading the lowest temperature drop of 14.8⁰ C. The highest temperature recorded is 43°C. The average annual rainfall is 570 MM.

The region is spread over by medium and deep black soil and red sandy soil derived from sandstones, limestone-dolomite and shales. The average soil thickness is 1 to 1.5 mts.

It is reported that, the pioneering survey for limestone-dolomite was conducted by Capt. Newbold in 1842- 45 in the Kaladagi basin.

GEOLOGY OF THE AREA

The geology of the area is quite well known World over for the Proterozoic sedimentary basins popularly known as “Kaladgi Formation”. These rocks are deposited in an extensive basin (including the areas of Belgaum, Dharwad, Bijapur, Bidar & Gulbarga districts) below sea level. The rocks are succeeding the Archaean rocks. The rocks are named after the village “Kaladgi” now in Bagalkot district. The Kaladgi rocks are separated from the underlying schistose and Granitic rocks of Archaean age by a profound unconformity “The Great Eparchaean Unconformity” typically exposed near “Yellamma Gudda”. The Kaladgi rocks are least disturbed shallow marine sediments. These rock formations are covered by the Deccan Volcanic rocks in the northern part, which are of much younger period. The basin is believed to extend in a NW direction about 40-50 miles. The basin extends EW for nearly 500 km and is hidden beneath the Deccan Traps. The basin is located in the northern part of the Dharwar Craton, Karnataka. The principal rock types include- orthoquartzite, argillite, carbonates (including limestone & dolomite).

Stratigraphy: The Kaladgi has now been accorded a Supergroup status consisting of a lower group for which the name Bagalkot Group has been given. The upper sequence is designated as the Badami Group. Following is the details of Bagalkot Group.

BAGALKOT GROUP	Badami Group(285)	Katageri Limestone (150) Kerur Arenite (135)	Limestone, shale Conglomerate, arenite, shale
	Angular Unconformity		
	Intrusives: Quartz veins, pegmatite, dolerite dykes		
	Simikeri Subgroup (1150)	Hosakatti Argillite(700) Arlikatti Dolomite (130) Niralkeri Breccia (40) Kundargi Quartzite (280)	Argillite Dolomite, hematite bed Chert Breccia Conglomerate, quartzite, argillite
	Disconformity		
	Lokapur Sub-group (2750)	Yadahalli Argillite (60) Muddapur dolomite (5650) Chikshillikeri Limestone (800) Yargatti Argillite (720) Mahakut Breccia (130) Saundatti Quartzite (475)	Argillite Dolomite, Limestone, argillite Limestone, shale Argillite, dolomite Chert breccias Conglomerate, quartz, shale
	Nonconformity and angular Conformity		
Gneisses/Granites and Schist Belts of Dharwar craton			

DISCRIPTION OF ROCK UNITS

The megascopic characters and mode of occurrence of different rock types encountered in the field are as follows:

Laterites: Along the highway, the laterites were observed, occurring as isolated hill caps representing the youngest among the succession, overlying the Kaladagi's. These laterites are ferruginous porous and highly altered formations owing to residual weathering. The extent of outcrops is less conspicuous.

SRP Sandstone Quarry (Photos 1-6: We visited SRP Sandstone Quarry owned by Shri H G Shripada, Member of Mining Engineers' Association of India, Belgaum Chapter. He welcomed us and explained in detail about the sandstone quarry, how the blocks of sandstone are being cut, used as building material as polished tiles, M-sand preparation, fine material used for painting etc, which he told is "0 – waste management" mine. Our teachers explained us about the structures observed in these sandstone deposits such as ripple marks, sole marks etc. They also explained the importance of conglomerate/breccia in stratigraphy and as building material.

Quartzites: The Quartzites occurs as prominent and well demarcated outcrops. These Quartzites range from pale gray to pinkish colored hard and compact coarse grained, highly jointed trending WNW-ESE with general southerly dip ranging from 50°-65°.

Conglomerates: The basal conglomerates lie immediately below Quartzites indicating a break in deposition. The siliceous matrix encloses ferruginous quartz pebbles, which are oval to sub oval shaped ranging in size from few centimeters to 2.3 inches.

High Calcium Limestone: Bluish Crystalline limestones occur parallel to the quartzites underlying conglomerate beds. These are of two types viz. bluish to bluish gray high calcium limestones and variegated limestone of various colors of bluish gray, green and pale pink linear bands. The general trend of the formation is similar to quartzites with southerly dip ranging from 35° to 65°. At places the trend changes to NNW-SSE with easterly dip of 15° to 20° signifying folded nature. At Nandi Minerals Limestone mines, majority of the deposits are Limestone (Photos 7-8). Lime Kankar/Gossan deposits are observed on the surface near the mines. Shri GSN Murty, Member of Mining Engineers' Association of India and Mining Engineer, elaborated how the mineral is mined, grading and marketing etc. He also explained how the ore estimation is done using core drilling.

Dolomites: The dolomite occurrences are not very extensive but appear as isolated and scattered outcrops of varying dimensions associated with high calcium limestones. The bands are linear and pale gray to ash gray hard and compact with typical elephant skin weathered outer surface. The trend is also variable due to flexibility resulting in folding and contortion into arcs. The general trend of the formation is WNW-ESE with low angle Easterly dip. The major joints are disposed at right angles to the strike direction.

Overall, we were enlightened with mining types, mine planning, resource estimation, afforestation, benches, bench width, core drilling, blasting, ore transportation, mine closure, estimation of ore, uses etc. During the field visit we could observe various geological features such as weathering effect giving rise to leaching/dissolution effect.

Acknowledgements:

We are grateful to Dr.P.T.Hanamgond, Head Department of Geology; Prof.Suraj Mense and Prof Yogesh Kutre of Geology department, for conducting this study tour. We thank Shri. Shri H G Shripada, MEAI Belgaum Chapter Member & Mine owner, Bagalkote; and Shri GSN Murty, MEAI Belgaum Chapter member and Consultant Mining Engineer for explaining us the mining techniques.

Reference

M.S.Anand, R.Srinivasiah and B.S.N.Shetty, 1999. Investigation for Limestone Dolomites in the Submersion Zone from Bagalkot to Kaladgi, Bagalkot District (Field Session 1980-81), Dept of Mines and Geology, Bangalore, No.310, 12p.

Name:	Class: B.Sc. VI Semester
Examination No.:	
Signature and Name of the staff:	Dr.P.T.Hanamgond Prof. Suraj S Mense Prof. Yogesh M Kutre

FIELD PHOTOGRAPHS



Geological study tour Bandiwade, Kolhapur, Maharashtra

Date of Visit 12 October 2018

REPORT

We visited, the Columnar Basalt exposure exposed near Panhala, at a village Bandiwade, Kolhapur district. The place is well known for the famous geological columnar basalts exposed in a cliff. Each column is about 1.5 m diameter and varying height of 5 to 15 m. The basaltic rock belong to Deccan Volcanic Province (Deccan Traps). On the way, we could observe similar columnar exposures all along Panhala hill range.

We visited the Panhala hill, where similar structures all along the fort area were seen. We visited the botanical garden and laterite deposits with varying colors in the garden premises. The students were shown various structures like basaltic layers, amygdaloidal and vesicular structures, columnar structures etc.

FIELD PHOTOGRAPHS



**SKE SOCIETY'S
G.S.Sc. COLLEGE, BELGAUM**



REPORT

**GEOLOGICAL STUDY TOUR AROUND
AURANGABAD, MAHARASHTRA**

Date of visit 27 Sept to 1st Oct 2019

**B.Sc. FIFTH SEMESTER
GEOLOGY (OPTIONAL)**



**SKE SOCIETY'S
G.S.Sc. COLLEGE, BELGAUM**

Department of Geology

CERTIFICATE

This is to certify that Mr/Miss. _____ of
B.Sc. Fifth Semester with Geology as optional subject has attended the
Geological Study Tour to **“GEOLOGICAL STUDY TOUR AROUND
AURANGABAD, MAHARASHTRA”** from 27 Sept to 1st Oct 2019.

Exam Seat No. _____

Date:

Head, Dept. of Geology

GEOLOGICAL STUDY TOUR REPORT
Places of visit: Aurangabad and surrounding places.
Date of Journey: 27th Sept to 1st Oct 2019.

Geological study tour was conducted for B.Sc.V Sem students for five days. We started our journey on 27th Sept night at 8.0 pm via Kolhapur.

In this study tour we visited to Ajanta, Ellora and Basalt quarry around Aurangabad. On the way back we visited GARGOTI, one of the best mineral museum of India, in Sinnar taluka of Nasik district, Maharashtra.

Geological Background of the Area:

Aurangabad is one of the historic city of Maharashtra state. The majority of Maharashtra state is covered by the Deccan Traps which contain lava flows erupted from Upper Cretaceous to Lower Eocene age well known as Deccan Volcanic Province (DVP). The Deccan flood basalt erupted approximately around 65 My ago in the Indian peninsula and currently covers more than 500000 km². These are best developed in the Western Ghat escarpment in the SW part of the province where they are 1.7 –2.0 km thick. They thin out gradually towards the east. Dykes, sills and plugs are important components of the magmatic plumbing system of the Deccan Trap.

Aurangabad district is completely covered by the basaltic lava flows, which are horizontal and each flow has two distinct units. The upper layers consist of vesicular and amygdaloidal zeolitic; while the bottom layer consists of massive basalt. The soil is black derived from weathering of basaltic rocks. Many structural features (e.g. faults, fractures, joints, veins and dykes) are exposed around.

Location 1: Tisgaon [N19.8689, E75.2480]

We visited a huge basaltic quarry, which has compact Basalt. The rock has amygdaloidal structure and contain zeolite minerals. We could observe the water seepage along the junction of weathered zone and hard rock. The surface water percolates through the weathered zone and seeps out from the hard rock junction.

Location 2: Ellora Caves [20.0268°N 75.1771°E]

Ellora caves are well known historic monument recognized by UNESCO as heritage site during 1983. There are over 34 caves which are carved within the massive basaltic layer. Of these the Monolithic Vishnu temple is famous which has been carved from top and from front.

Most of the caves were constructed during the period ranging from 2nd century BC to 6th century AD.

Location 3: Ajanta Caves [20°33 '12"N 75°42 '01"E]

The caves were built in two phases, the first phase starting around 2nd century BC, while the second phase was built around 400–650 BC, according to older accounts, or in a brief period of 460–480 BC according to later scholarship. The site is a protected monument in the care of the Archaeological Survey of India. They were

covered by forest accidentally "discovered" and brought to light in 1819 by a colonial British officer Captain John Smith. The caves are carved in the Basaltic rock exposed along the northern wall which is U shaped gorge cut by the river Waghur. Within the gorge there are number of waterfalls.

Location 4: Majnu Hills [N19°53.968',E075°20.900']

Strike: N75°W, Dip: 5°NE

The site is peculiar where an igneous dyke is seen with horizontal columnar structures which were formed due to tensional forces. Hanamgond et al., (2011) have reported a preliminary observations on this dyke. They have reported that there is a displacement of this dyke and attributed it to localized tectonic disturbance or deformation. These dykes are made up of amygdaloidal basalt, which cuts through the porphyritic basalt flow, thus developing a horizontal contact of the lower porphyritic basalt with the upper amygdaloidal basalt. The compact basalt dyke cuts through these two flows.

Location 5: Lonar Lake [19°58 '35"N 76°30 '30"E]

We visited the world famous Lonar Lake, located at Lonar in Buldhana district, Maharashtra, India. It is created by the impact of a meteorite. Lonar crater, is notified National Geoheritage Monument. The crater has water that is saline, soda lake,. Lonar Lake was created by a asteroid collision with earth impact during the Pleistocene Epoch. It is one of the four known, hyper velocity, impact craters in basaltic rock anywhere on Earth. The other three basaltic impact structures are in southern Brazil. A Max. diameter of 1.2 kilometres (3,900m).The crater's age has been estimated to be 52,000 ± 6,000 years (Cretaceous). The United States Geological Survey, Geological Society of India have conducted extensive studies of the site Biological nitrogen fixation was discovered in this lake in 2007 and also found that the minerals, in the lake soil, are very similar to the minerals found in moon rock brought back during Apollo Program. The crater has an oval shape. The meteorite impact came from the east, at an angle of 35 to 40 degrees.

Max. length 1,830 m (6,000m); Surface area 1.13 km² (0.44 sq miles) Average depth 137 m (449 ft); Max. depth 150 m (490 ft)

Location 6: Gargoti Mineral Museum

It is one of the best mineral museums in India and is the 1st Museum in “Sinnar taluk of Nasik district” that came in to existence in April 2001. Gargoti Museum displays the personal collection of Connoisseur Mr.K.C.Pandey. His collection consists of:

Natural Indian Zeolite Minerals & Crystals, Natural Gems Stones, Natural Precious/Semi-Precious Stones, Natural Precious/Semi Precious Metals, Fossils, Stone Handicrafts (Statues) collected from all around the world. Very unique & rare Statue of Lord Ganesha and Jain Teerthankar carved out of a single piece of Himalayan Clear Quartz; gold nuggets, native metals, etc., are worth mentioning.

We reached Belgaum night at 1.30 am on 2 October.

Acknowledgements: We are grateful to Dr.P.T.Hanamgond and Yogesh Kutre, for conducting this study tour. We thank our Principal, for allowing us for this study tour.

Name:	Class: B.Sc.V Sem Examination No.
Signature and Name of the staff:	
Dr.P.T.Hanamgond	Yogesh Kutre

DESCRIPTIONS OF FIELD PHOTOGRAPHS:

Field Photo 1: Exposure of a cliff at a basaltic quarry.

Field Photo 2: Mural joints exposed in the basaltic quarry

Field Photo 3: Infront of famous Vishnu temple cave at Ellora

Field Photo 4: Geological features are being explained by Prof. Dnyaneshwar Wayal

Field Photo 5: View of one of the cave at Ajanta

Field Photo 6: View of the Lonar Lake

Field Photo 7: The dried up tree branches at Lonar lake owing to saline water action

Field Photo 8: A view of mesa structure with a Basaltic lava flow

Field Photo 9: Sharp contact of the porphyritic basalt separated by a thin burnt rock and top massive basaltic flow at Ajanta caves indicating two distinct flows.

Field Photo 10: Students collecting specimen of amygdaloidal, vesicular basalt and zeolite specimen.

Field Photo 11: Close up of a zeolite mineral cavity

Field Photo 12: Waterfall at Ajanta caves.

Field Photo 13: Visit to Gargoti mineral museum. Guide explaining about the mineral collection.

Field Photo 14 & 15: Visit to Gargoti mineral museum.

FIELD PHOTOGRAPHS





**SKE SOCIETY'S
G.S.Sc. COLLEGE, BELGAUM**

REPORT

**GEOLOGICAL STUDY TOUR AROUND
KARWAR-ANKOLA & YANA**

Date of visit 19-20th March 2015

**B.Sc. IV SEMESTER
GEOLOGY (OPTIONAL)**

**SKE SOCIETY'S
G.S.Sc. COLLEGE, BELGAUM**

Department of Geology

CERTIFICATE

This is to certify that Mr/Miss. _____ of
B.Sc. IV Semester with Geology as optional subject has attended the Geological
Study Tour to “**GEOLOGICAL STUDY TOUR AROUND KARWAR –ANKOLA &
YANA**” on 19-20th March 2015.

Exam Seat No. _____

Date:

Head, Dept. of Geology

GEOLOGICAL STUDY TOUR REPORT
Places of visit: Karwar-Ankola and Yana

Date of Journey: 19th March to 20th March 2015.

Geological study tour was conducted for B.Sc.IV students for three days on dates mentioned above. We visited to Karwar-Ankola and Yana to study the geological features.

On first day 19th we visited Karwar. At Karwar, we were taken to show the coastal landforms such as beach, estuary/river mouth, headland, island, tombolo, spit, bars, wave action, longshore currents etc. We were explained in brief the coastal processes operating along the beaches. At Nadibag beach, we were shown the Dolerite dyke the discordant intrusions as well as small scale intrusion with sill – the concordant intrusions. We were also shown and explained the occurrence of boudinage structures which are eye-like features of quartz and feldspars occurring in a line along the granitic-gneiss foliation. We were also shown 'A large isoclinal fold apart from many small scale folds. There are many pygmatic fold structures too.

At Belekeri beach, we could see an igneous intrusion, pegmatite intrusion with a clear cut contact with Granitic-gneiss. The granitic gneiss also shows spheroidal weathering.

At Karwar, near Binaga, on the road cut, we could see xenoliths and an igneous intrusion (dyke).

Geological Setting of the study area:

The coast of Uttara Kannada is bounded by Western Ghats on the east, which exhibit deep winding valleys, waving wooded hills, high peaks etc., and by Arabian sea in the west. The topography is in general hilly and wooded with broken and irregular hills averaging 600-700 m above sea level. Deep or wide mouthed bays & estuaries break the coast. It is varied and scenic with rocky Islands and capes, stretches of palm-fringed sandy beaches, which enclose between rocky headlands or knobs.

The coast presents a narrow strip of hinterland between the seashore and the Western Ghats, which varies between 5 to 20 km. It scarcely exists towards Karwar since the mountains dip in to the sea with scenic bays & Islands offshore. The

hinterland area is normally plain & is covered with sandy soil and usually under cultivation.

Based on the distinct landscapes, the coastal stretch of Uttara Kannada district has been classified into two physiographic units, the high lands and the narrow lowlands(Gazetteer of India, 1985).

The coastal tract of Karnataka is characterized by Precambrian crystalline rocks (Granites, Granitic gneisses and Schists), laterites & basic dykes. The rocks of the Uttara Kannada district form part of the Chitradurga group of Dharwar supergroup comprising metasediments and metavolcanics together with manganese and limestone formations, all of which overlie the basement migmatites and associated granitoids.

Geology of the Uttara Kannada district comprises of gneisses and granites with Dharwarian rocks like schists and amphibolites as older metamorphics within them. Other rock types present are, orthoquartzites, manganiferous chert and argillites, banded magnetite/haematite quartzite, limestone & dolomites, greywackes, laterites and basic dykes.

Granitic gneisses/granites cover major portion of the coastal tract, which is northwestern coastal continuation of peninsular gneisses or northern continuation of south canara gneisses/granites. The gneisses form prominent hills & headlands along the coast. The granites however are present as patches within gneisses. The granites/granitic gneisses of Karwar area are surrounded on the northeast by the rocks of Chitradurga group and on the south east by hornblende schist (Gupta et al, 1988). These granites/granitic gneisses at places near the coast have undergone chemical weathering giving rise to the conspicuous laterite deposits, well exposed in the southern part of the area.

Stratigraphic position	Rock formation	Age values determined for the corresponding rock formation in South Kanara Precambrian block (after Balasubramanian,1978).
Subrecent to recent	Sands/Soils	---
Tertiary (?)	Laterites	---
Middle Cddapahs	Dolerites	2.2 b.y.K-Ar age obtained for the younger ENE striking set of dolerites
Archaeans	Granites Gneiss	2.6 b.y.Rb-Sr age obtained for Karnara granites 3.2-3.6 b.y.K-Ar, Rb-Sr and Pb-Pb age obtained for Kanara Gneiss.
Older Metamorphics	1) Orthoamphibolites 2) Schists	Not dated but from field relation these are older. 3.2-3.6 b.y.

Next day, on 20th we were taken to Yana located about 45 km from Ankola, known for its gigantic cliffs with cocks comb peaks. It is located amongst the evergreen forest of the Sahyadri Mountains. It is reported that, Dr. Francis Buchan a British official, discovered Yana in 1801 while surveying the area on behalf of The East India Company (<http://www.kamat.com/kalranga/kar/yana.htm>). Locally known as The Bhairaveshwara Shikhara and the Mohini Shikhara or peaks. These unique rock formations have made Yana a popular destination for pilgrims, trekkers, geologists and nature lovers. In the bhairaveshwara shikhara, water seeps from the cracks and trickles from the erosional groves carved naturally, which faintly resembles a hood of cobra, and falls on a slight bulged rock below (projected as Shivalinga). These rock cliffs are formed by crystalline limestone. We were shown erosional features in limestone such as elephant skin weathering, solution cavities, erosional grooves, pinnacles, cocks comb structures etc.

Acknowledgements: We are grateful to Dr.P.T.Hanamgond and Miss.Manisha Dhuri, for conducting this study tour. We thank our Principal, for allowing us for this study tour.

Name:	Class: B.Sc.IV Sem
	Examination No.
Signature and Name of the staff:	
Dr.P.T.Hanamgond	Miss. Manisha Dhuri

DESCRIPTIONS OF FIELD PHOTOGRAPHS:

KARWAR-ANKOLA: 1) Sill at Nadibag 2) Fold structure at Nadibag 3) Dyke showing contact with granitic gneiss, at Belekeri. 4) Ptygmatic folding at Nadibag, 5) Isoclinal Fold at Nadibag, 6) Igneous intrusion (dyke) at Nadibag, and 7) Xenoliths at road cut near Binaga.

YANA: 8) Mohinishikara peak, 9 & 12) Bhairaveshwara peak showing effect of water and cocks comb structure, 10) Bhairaveshwara peak, 11) Elephant skin weathering, 13) Effect of water on Bhairaveshwara peak.



FIELD PHOTOGRAPHS
KARWAR - ANKOLA

FIELD PHOTOGRAPHS YANA



**SKE SOCIETY'S
G.S.Sc. COLLEGE, BELGAUM**

REPORT

**GEOLOGICAL STUDY TOUR AROUND
KARWAR & ANKOLA**

Date of visit **15-16th Sept 2019**

**B.Sc. THIDR SEMESTER
GEOLOGY (OPTIONAL)**

Black Sand beach at Tilmati, Karwar



**SKE SOCIETY'S
G.S.Sc. COLLEGE, BELGAUM**

Department of Geology

CERTIFICATE

This is to certify that Mr/Miss. _____ of
B.Sc. Third Semester with Geology as optional subject has attended the
Geological Study Tour to “**GEOLOGICAL STUDY TOUR AROUND KARWAR
AND ANKOLA**” on 15-16^h Sept 2019.

Exam Seat No. _____

Date:

Head, Dept. of Geology

GEOLOGICAL STUDY TOUR REPORT
Places of visit: Karwar and surrounding places.
Date of Journey: 15th to 16th Sept 2019.

Geological study tour was conducted for B.Sc.III Sem students for two days. We visited to Karwar-Ankola to study the geological features.

On first day 15th we visited Nadibag beach, Ankola, where we were shown the coastal landforms such as beach, estuary/river mouth, headland, island, tombolo, spit, bars, wave action, longshore currents etc. We were explained in brief the coastal processes operating along the beaches. At Nadibag beach headland, we were shown the Dolerite dyke the discordant intrusions as well as small scale intrusion with sill – the concordant intrusions. We were also shown and explained the occurrence of boudinage structures which are eye-like features of quartz and feldspars occurring in a line along the granitic-gneiss foliation. We were also shown 'A large isoclinal fold apart from many small scale folds. There are many pygmatic fold structures too in migmatite rock.

At Belekeri beach, we could see an igneous intrusion, pegmatite intrusion with a clear cut contact with Granitic-gneiss. The granitic gneiss also shows spheroidal weathering.

Enroute Karwar, along road cut, we could see several dykes intrusions.

Geological Setting of the study area:

The coast of Uttara Kannada is bounded by Western Ghats on the east, which exhibit deep winding valleys, waving wooded hills, high peaks etc., and by Arabian sea in the west. The topography is in general hilly and wooded with broken and irregular hills averaging 600-700 m above sea level. Deep or wide mouthed bays & estuaries break the coast. It is varied and scenic with rocky Islands and capes, stretches of palm-fringed sandy beaches, which enclose between rocky headlands or knobs.

The coast presents a narrow strip of hinterland between the seashore and the Western Ghats, which varies between 5 to 20 km. It scarcely exists towards Karwar since the mountains dip in to the sea with scenic bays & Islands offshore. The hinterland area is normally plain & is covered with sandy soil and usually under cultivation.

Based on the distinct landscapes, the coastal stretch of Uttara Kannada district has been classified into two physiographic units, the high lands and the narrow lowlands (Gazetteer of India, 1985).

The coastal tract of Karnataka is characterized by Precambrian crystalline rocks (Granites, Granitic gneisses and Schists), laterites & basic dykes. The rocks of the Uttara Kannada district form part of the Chitradurga group of Dharwar supergroup comprising metasediments and metavolcanics together with manganese and limestone formations, all of which overlie the basement migmatites and associated granitoids.

Geology of the Uttara Kannada district comprises of gneisses and granites with Dharwarian rocks like schists and amphibolites as older metamorphics within them. Other rock types present are, orthoquartzites, manganiferous chert and argillites, banded magnetite/haematite quartzite, limestone & dolomites, greywackes, laterites and basic dykes.

Granitic gneisses/granites cover major portion of the coastal tract, which is northwestern coastal continuation of peninsular gneisses or northern continuation of south canara gneisses/granites. The gneisses form prominent hills & headlands along the coast. The granites however are present as patches within gneisses. The granites/granitic gneisses of Karwar area are surrounded on the northeast by the rocks of Chitradurga group and on the south east by hornblende schist (Gupta et al, 1988). These granites/granitic gneisses at places near the coast have undergone chemical weathering giving rise to the conspicuous laterite deposits, well exposed in the southern part of the area.

Stratigraphic position	Rock formation	Age values determined for the corresponding rock formation in South Kanara Precambrian block (after Balasubramanian,1978).
Subrecent to recent	Sands/Soils	---
Tertiary (?)	Laterites	---
Middle Cddapahs	Dolerites	2.2 b.y.K-Ar age obtained for the younger ENE striking set of dolerites
Archaeans	Granites Gneiss	2.6 b.y.Rb-Sr age obtained for Karnara granites 3.2-3.6 b.y.K-Ar, Rb-Sr and Pb-Pb age obtained for Kanara Gneiss.
Older Metamorphics	1) Orthoamphibolites 2) Schists	Not dated but from field relation these are older. 3.2-3.6 b.y.

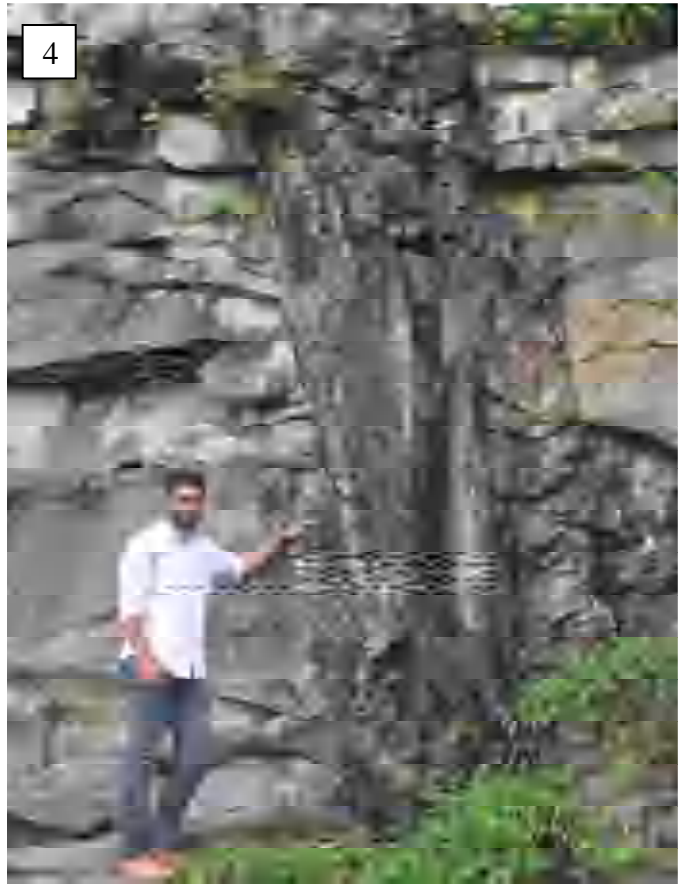
Acknowledgements: We are grateful to Dr.P.T.Hanamgond and Prof.Suraj Mense, for conducting this study tour. We thank our Principal, for allowing us for this study tour.

Name:	Class: B.Sc.III Sem Examination No.
Signature and Name of the staff:	
Dr.P.T.Hanamgond	Suraj S Mense

DESCRIPTIONS OF FIELD PHOTOGRAPHS:

KARWAR-ANKOLA: 1) Beach study at Nadibag 2) Dyke structure at Nadibag 3) Fault structure in granitic gneiss, at Nadibag. 4) Dyke near Aversa, 5) Inclined dyke near Aversa, 6) Black Sand deposit at Tilmati beach, Karwar 7) Dyke exposure with weathered rock at road cut near Aversa.

FIELD PHOTOGRAPHS



**SKE SOCIETY'S
G.S.Sc. COLLEGE, BELGAUM**



REPORT OF

**GEOLOGICAL STUDY TOUR TO
GODCHINAMALKI AND GOKAK FALLS**

Date of visit 03 August 2016

B.Sc. FIRSTSEMESTER
GEOLOGY (OPTIONAL)

**SKE SOCIETY'S
G.S.Sc. COLLEGE, BELGAUM**

Department of Geology

CERTIFICATE

This is to certify that Mr/Miss. _____ of B.Sc. I Semester with Geology as optional subject has attended the Geological Study Tour to **“Geological Study Tour To Godchinamalki And Gokak Falls”** on **03 August 2016**.

Exam Seat No. _____

Head, Dept. of Geology

GEOLOGICAL STUDY TOUR TO GODCHINAMALKI AND GOKAK FALLS

REPORT

Date of visit 03 August 2016

We the B.Sc.I students of Geology Department visited Godchinamalki, Gokak Falls and Yogi Kolla as a part of curriculum. We started our journey on 03 August 2016 morning and returned on the same day evening.

Geological Background of the Area:

The geology of the area is quite well known World over for the **Proterozoic** sedimentary basins popularly known as "**Kaladgi Formation**". These rocks are deposited in an extensive basin (including the areas of Belgaum, Dharwad, Bijapur, Bidar & Gulbarga districts) below sea level. The rocks are succeeding the Archaean rocks. The rocks are named after the village "**Kaladgi**" now in Bagalkot district. The Kaladgi rocks are separated from the underlying schistose and Granitic rocks of Archaean age by a profound unconformity "The Great Eparchaeon Unconformity" typically exposed near "Yellamma Gudda". The Kaladgi rocks are least disturbed shallow marine sediments. These rock formations are covered by the Deccan Volcanic rocks in the northern part, which are of much younger period. The basin is believed to extend in a NW direction about 40-50 miles. The basin extends EW for nearly 500 km and is hidden beneath the Deccan Traps. The principal rock types include- orthoquartzite, argillite, carbonates (including limestone & dolomite).

Stratigraphy:

Upper	Shales, Limestones and Haematite Schists Quartz-arenites, local Conglomerates & Breccia
Lower	Limestones, Clays and Shales, Siliceous Limestones and Hornstone Breccia Quartz-arenite, Conglomerate & Sandstones.

The Kaladgi has now been accorded a supergroup status consisting of a lower group for which the name Bagalkot Group has been given. The upper sequence is designated as the Badami Group.

Geological structures seen during the field study

We were taught the Geological action of River and various features such as water falls, cascade, potholes, meandering, joints, hogback, mesa, natural levee etc. We were shown the sedimentary rocks conglomerate & breccias, graded bedding, stratification etc., in the field. We were taught the use of Brunton and Clinometer compass to note the strike and dip direction of an outcrop; the GPS to locate the Latitude and Longitudes.

Following are the geological features observed during the study tour:

- a) On the way to Gokak were shown the Boulder Conglomerate which is a unique feature of sedimentary rock (Photo A)
- b) **Cascade:** At Godchinamalki, the water falls on step like sedimentary rocks due to erosion of sandstone/quartzite beds giving rise to cascade type of water fall. The formation of step like feature is mainly due to the joints present in the quartz arenites. Field photo C shows the differential weathering and horizontal beds of sandstone/Quartz arenites, where as Photo D shows the biological weathering mainly by roots of plants.
- c) **Free Water Fall at Gokak:** It is thought that, the waterfall has been developed mainly due to faulting of rocks, where the water from River Ghataprabha jumps about 80 ft. The water from the waterfalls is being used for hydroelectric power generation, mainly used for the Gokak Cotton Mills. Here we could see extensive distribution of potholes. These potholes have been interconnected and have been eroded at the water fall (Photo E). The potholes are formed due to the swirling currents of the river using rocks & pebbles as tools developed these. This is an important erosional feature
- d) **Meandering, Hogback, mesa, Natural levee (Photo F):** River meandering with natural levee is seen in front of the Gokak falls. The hogback and mesa landforms are clearly seen far off from the water falls.
- e) **Yogi Kolla Valley:** The Yogi Kolla (Photo G) is a valley which shows head ward erosion. After climbing about 150 steps, we could reach the cave temple in the hillock. The rocks show horizontal bedding and beautiful joint patterns.

Acknowledgements: We are grateful to Dr.P.T.Hanamgond & Mr. Yogesh Kutre, of Geology department, for conducting this study tour. We thank our Principal, Prof.A.K.Mense, for allowing us for this study tour.

Description of Field Photographs:

(A); Boulder conglomerate on the way to Gokak. (B); Stratified sedimentary rocks at Godchinmalki falls showing Cascade, (C) Stratification showing differential weathering & joints in rocks at Godchinmalki; (D) Biological weathering; (E) At Gokak water falls, (F) Meandering & levee deposit at Gokak falls; (G) Panormic view of Gokak falls. and (H) Yogi Kolla Valley;

Name:	Class: B.Sc.I Examination No.
Signature and Name of the staff:	
Dr.P.T.Hanamgond	Mr.Yogesh Kutre

FIELD PHOTOGRAPHS



**SKE SOCIETY'S
G.S.Sc. COLLEGE, BELGAUM**



REPORT OF

**GEOLOGICAL STUDY TOUR TO
GODCHINAMALKI AND GOKAK FALLS**

Date of visit 5 August 2017

B.Sc. FIRSTSEMESTER
GEOLOGY (OPTIONAL)

**SKE SOCIETY'S
G.S.Sc. COLLEGE, BELGAUM**

Department of Geology

CERTIFICATE

This is to certify that Mr/Miss. _____ of B.Sc. I Semester with Geology as optional subject has attended the Geological Study Tour to **“Geological Study Tour To Godchinamalki And Gokak Falls”** on 5 August 2017.

Exam Seat No. _____

Head, Dept. of Geology

GEOLOGICAL STUDY TOUR TO GODCHINAMALKI AND GOKAK FALLS

REPORT

Date of visit 05 August 2017

We the B.Sc.I students of Geology Department visited Godchinamalki, Gokak Falls and Yogi Kolla as a part of curriculum. We started our journey on 05 August 2017 morning and returned on the same day evening.

Geological Background of the Area:

The geology of the area is quite well known World over for the **Proterozoic** sedimentary basins popularly known as "**Kaladgi Formation**". These rocks are deposited in an extensive basin (including the areas of Belgaum, Dharwad, Bijapur, Bidar & Gulbarga districts) below sea level. The rocks are succeeding the Archaean rocks. The rocks are named after the village "**Kaladgi**" now in Bagalkot district. The Kaladgi rocks are separated from the underlying schistose and Granitic rocks of Archaean age by a profound unconformity "The Great Eparchaeon Unconformity" typically exposed near "Yellamma Gudda". The Kaladgi rocks are least disturbed shallow marine sediments. These rock formations are covered by the Deccan Volcanic rocks in the northern part, which are of much younger period. The basin is believed to extend in a NW direction about 40-50 miles. The basin extends EW for nearly 500 km and is hidden beneath the Deccan Traps. The principal rock types include- orthoquartzite, argillite, carbonates (including limestone & dolomite).

Stratigraphy:

Upper	Shales, Limestones and Haematite Schists Quartz-arenites, local Conglomerates & Breccia
Lower	Limestones, Clays and Shales, Siliceous Limestones and Hornstone Breccia Quartz-arenite, Conglomerate & Sandstones.

The Kaladgi has now been accorded a supergroup status consisting of a lower group for which the name Bagalkot Group has been given. The upper sequence is designated as the Badami Group.

Geological structures seen during the field study

We were taught the Geological action of River and various features such as water falls, cascade, potholes, meandering, joints, hogback, mesa, natural levee etc. We were shown the sedimentary rocks conglomerate & breccias, graded bedding, stratification etc., in the field. We were taught the use of Brunton and Clinometer compass to note the strike and dip direction of an outcrop; the GPS to locate the Latitude and Longitudes.

Following are the geological features observed during the study tour:

- a) On the way to Gokak were shown the Boulder Conglomerate which is a unique feature of sedimentary rock (Photo A)
- b) **Cascade:** At Godchinamalki, the water falls on step like sedimentary rocks due to erosion of sandstone/quartzite beds giving rise to cascade type of water fall. The formation of step like feature is mainly due to the joints present in the quartz arenites. Field photo C shows the differential weathering and horizontal beds of sandstone/Quartz arenites, where as Photo D shows the biological weathering mainly by roots of plants.
- c) **Free Water Fall at Gokak:** It is thought that, the waterfall has been developed mainly due to faulting of rocks, where the water from River Ghataprabha jumps about 80 ft. The water from the waterfalls is being used for hydroelectric power generation, mainly used for the Gokak Cotton Mills. Here we could see extensive distribution of potholes. These potholes have been interconnected and have been eroded at the water fall (Photo E). The potholes are formed due to the swirling currents of the river using rocks & pebbles as tools developed these. This is an important erosional feature
- d) **Meandering, Hogback, mesa, Natural levee (Photo F):** River meandering with natural levee is seen in front of the Gokak falls. The hogback and mesa landforms are clearly seen far off from the water falls.
- e) **Yogi Kolla Valley:** The Yogi Kolla (Photo G) is a valley which shows head ward erosion. After climbing about 230 steps, we could reach the cave temple in the hillock. The rocks show horizontal bedding and beautiful joint patterns.

Acknowledgements: We are grateful to Dr.P.T.Hanamgond & Mr. Suraj Mense, of Geology department, for conducting this study tour. We thank our Principal, Prof.A.K.Mense, for allowing us for this study tour.

Description of Field Photographs:

(A); Boulder conglomerate on the way to Gokak. (B); Stratified sedimentary rocks at Godchinmalki falls showing Cascade, (C) Stratification showing differential weathering & joints in rocks at Godchinmalki; (D) Biological weathering; (E) At Gokak water falls, (F) Meandering & levee deposit at Gokak falls; (G) Panormic view of Gokak falls. and (H) Yogi Kolla Valley;

Name:	Class: B.Sc.I Examination No.
Signature and Name of the staff:	
Dr.P.T.Hanamgond	Mr. Suraj Mense

FIELD PHOTOGRAPHS



**SKE SOCIETY'S
G.S.Sc. COLLEGE, BELGAUM**



REPORT OF

**GEOLOGICAL STUDY TOUR TO
GODCHINAMALKI AND GOKAK FALLS**

Date of visit 30 August 2019

B.Sc. FIRST SEMESTER
GEOLOGY (OPTIONAL)



**SKE SOCIETY'S
G.S.Sc. COLLEGE, BELGAUM**

Department of Geology

CERTIFICATE

This is to certify that Mr/Miss. _____ of B.Sc. I Semester with Geology as optional subject has attended the Geological Study Tour to **“Geological Study Tour To Godchinamalki And Gokak Falls”** on **30 August 2019**.

Exam Seat No. _____

Head, Dept. of Geology

SKE Society's GSSc Degree College,
DEPARTMENT OF GEOLOGY

**GEOLOGICAL STUDY TOUR TO
GODCHINAMALKI AND GOKAK FALLS**

REPORT

Date of visit 30 August 2019

We the B.Sc.I students of Geology Department visited Godchinamalki, Gokak Falls and Yogi Kolla as a part of curriculum. We started our journey on 30 August 2019 morning and returned on the same day evening.

Geological Background of the Area:

The geology of the area is quite well known World over for the **Proterozoic** sedimentary basins popularly known as "**Kaladgi Formation**". These rocks are deposited in an extensive basin (including the areas of Belgaum, Dharwad, Bijapur, Bidar & Gulbarga districts) below sea level. The rocks are succeeding the Archaean rocks. The rocks are named after the village "**Kaladgi**" now in Bagalkot district. The Kaladgi rocks are separated from the underlying schistose and Granitic rocks of Archaean age by a profound unconformity "The Great Eparchaean Unconformity" typically exposed near "Yellamma Gudda". The Kaladgi rocks are least disturbed shallow marine sediments. These rock formations are covered by the Deccan Volcanic rocks in the northern part, which are of much younger period. The basin is believed to extend in a NW direction about 40-50 miles. The basin extends EW for nearly 500 km and is hidden beneath the Deccan Traps. The principal rock types include- orthoquartzite, argillite, carbonates (including limestone & dolomite).

Stratigraphy:

Upper	Shales, Limestones and Haematite Schists Quartz-arenites, local Conglomerates & Breccia
Lower	Limestones, Clays and Shales, Siliceous Limestones and Hornstone Breccia Quartz-arenite, Conglomerate & Sandstones.

The Kaladgi has now been accorded a supergroup status consisting of a lower group for which the name Bagalkot Group has been given. The upper sequence is designated as the Badami Group.

Geological structures seen during the field study

We were taught the Geological action of River and various features such as water falls, cascade, potholes, meandering, joints, hogback, mesa, natural levee etc. We were shown the sedimentary rocks conglomerate & breccias, graded bedding, stratification etc., in the field. We were taught the use of the GPS to locate the Latitude and Longitudes.

Following are the geological features observed during the study tour:

- a) On the way to Gokak were shown the Conglomerate deposit, Conglomerate is a rock which is a unique feature of sedimentary rock that indicates energy condition, long transport etc (Photo A)
- b) **Cascade:** At Godchinamalki, the water falls on step like sedimentary rocks due to erosion of sandstone/quartzite beds giving rise to cascade type of water fall. The formation of step like feature is mainly due to the joints present in the quartz arenites. Field photo C shows the differential weathering and horizontal beds of sandstone/Quartz arenites, where as Photo D shows the biological weathering mainly by roots of plants.
- c) **Free Water Fall at Gokak:** It is thought that, the waterfall has been developed mainly due to faulting of rocks, where the water from River Ghataprabha jumps about 80 ft. The water from the waterfalls is being used for hydroelectric power generation, mainly used for the Gokak Cotton Mills. Here we could see extensive distribution of potholes. These potholes have been interconnected and have been eroded at the water fall (Photo E). The potholes are formed due to the swirling currents of the river using rocks & pebbles as tools developed these. This is an important erosional feature. River meandering with natural levee is seen in front of the Gokak falls (Photo F). The hogback and mesa landforms are clearly seen far off from the water falls. We were also shown the effect of recent floods near the temple (Photo H)
- d) **Yogi Kolla Valley:** The Yogi Kolla is a valley which shows head ward erosion. After climbing about 230 steps, we could reach the cave temple in the hillock. The rocks show horizontal bedding and beautiful joint patterns.

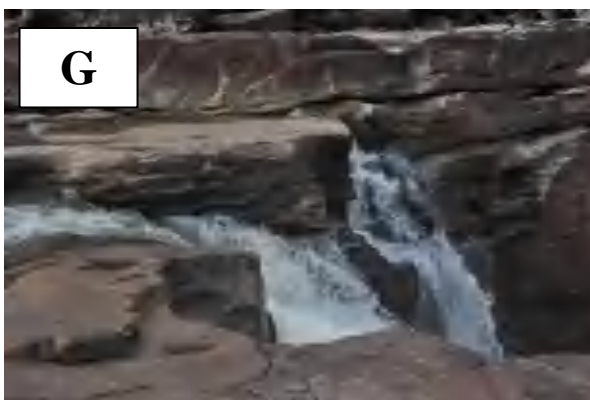
Acknowledgements: We are grateful to Dr.P.T.Hanamgond & Mr. Suraj Mense, of Geology department, for conducting this study tour.

Description of Field Photographs:

(A); Sequence of coarse (Conglomerate) and fine (Sandstone) beds on the way to Gokak. (B); Godchinmalki Cascade, (C) Stratification showing differential weathering & joints in rocks at Godchinmalki; (D) Biological weathering; (E) At Gokak water falls observing pot holes, (F) Meandering & levee deposit at Gokak falls; (G) Gokak Water fall; and (H) Effect of recent flood that has destroyed the protection wall.

Name:	Class: B.Sc.I Examination No.
Signature and Name of the staff:	
Dr.P.T.Hanamgond	Mr. Suraj Mense

FIELD PHOTOGRAPHS



**SKE SOCIETY'S
G.S.Sc. COLLEGE, BELGAUM**

GEOLOGY DEPARTMENT



REPORT

**GEOLOGICAL STUDY TOUR AROUND
KARWAR AND ANKOLA**

B.Sc III Semester

Date of visit 6-7 February 2021



**SKE SOCIETY'S
G.S.Sc. COLLEGE, BELGAUM**

Department of Geology

CERTIFICATE

This is to certify that Mr/Miss. _____ of B.Sc. III Semester with Geology as optional subject has attended the “**Geological Study Tour around Karwar and Ankola**” on **6 – 7 February 2021**.

Exam Seat No. _____

Head, Dept. of Geology

GEOLOGICAL STUDY TOUR REPORT

Places of visit: Karwar and Ankola

Date of Journey: 6 – 7 February 2021.

Geological study tour was conducted for B.Sc.III students for two days on dates mentioned above. We visited to Karwar and Ankola to study the geological features.

On first day we visited Nadibag beach near Ankola, we were shown variety of geological structures that are equivalent to text book examples such as Dyke, Sill, Fault, Joints, Fold, Ptygmatic folding, Boudign structure etc., and variety of rocks exposed on the beach such as Granitic Gneiss, Amphibolite, Pegmatite with Graphic texture, laterite, migmatite etc. We were also shown various coastal landforms such as pocket beaches, headlands, bay beaches, wave cut tunnel etc. At Belekeri beach, we could see an igneous intrusion, pegmatite intrusion with a clear cut contact with Granitic-gneiss. The granitic gneiss also shows spheroidal weathering. We could see wave cut notches in laterite rock which shows tidal fluctuation.

On second day we visited Karwar, were taken to show the coastal landforms such as beach, estuary/river mouth, headland, island, tombolo, spit, bars, wave action, longshore currents etc. We were explained in brief the coastal processes operating along the beaches. At Majali and Tilmathi, we were shown various rock types such as, amphibolites, Granitic gneisses, quartz veins, dyke intrusions, ladder vein structure, micro fault, joints, black sand (placer) deposit, wave cut caves, shell deposit etc. On the way to Karwar, near Aversa, on the road cut, we could see dyke a discordant feature an igneous intrusion.

Geological Setting of the study area:

The coast of Uttara Kannada is bounded by Western Ghats on the east, which exhibit deep winding valleys, waving wooded hills, high peaks etc., and by Arabian sea in the west. The topography is in general hilly and wooded with broken and irregular hills averaging 600-700 m above sea level. Deep or wide mouthed bays & estuaries break the coast. It is varied and scenic with rocky Islands and capes, stretches of palm-fringed sandy beaches, which enclose between rocky headlands or knobs.

The coast presents a narrow strip of hinterland between the seashore and the Western Ghats, which varies between 5 to 20 km. It scarcely exists towards Karwar since the mountains dip in to the sea with scenic bays & Islands offshore. The hinterland area is normally plain & is covered with sandy soil and usually under cultivation.

Based on the distinct landscapes, the coastal stretch of Uttara Kannada district has been classified into two physiographic units, the high lands and the narrow lowlands (Gazetteer of India, 1985).

The coastal tract of Karnataka is characterized by Precambrian crystalline rocks (Granites, Granitic gneisses and Schists), laterites & basic dykes. The rocks of the Uttara Kannada district form part of the Chitradurga group of Dharwar supergroup comprising metasediments and metavolcanics together with manganese and limestone formations, all of which overlie the basement migmatites and associated granitoids.

Geology of the Uttara Kannada district comprises of gneisses and granites with Dharwarian rocks like schists and amphibolites as older metamorphics within them. Other rock types present are, orthoquartzites, manganiferous chert and argillites, banded magnetite/haematite quartzite, limestone & dolomites, greywackes, laterites and basic dykes.

Granitic gneisses/granites cover major portion of the coastal tract, which is northwestern coastal continuation of peninsular gneisses or northern continuation of south canara gneisses/granites. The gneisses form prominent hills & headlands along the coast. The granites however are present as patches within gneisses. The granites/granitic gneisses of Karwar area are surrounded on the northeast by the rocks of Chitradurga group and on the south east by hornblende schist (Gupta et al, 1988). These granites/granitic gneisses at places near the coast have undergone chemical weathering giving rise to the conspicuous laterite deposits, well exposed in the southern part of the area.

Stratigraphic position	Rock formation	Age values determined for the corresponding rock formation in South Kanara Precambrian block (after Balasubramanian,1978).
Subrecent to recent	Sands/Soils	---
Tertiary (?)	Laterites	---
Middle Cddapahs	Dolerites	2.2 b.y.K-Ar age obtained for the younger ENE striking set of dolerites
Archaean	Granites Gneiss	2.6 b.y.Rb-Sr age obtained for Karnara granites 3.2-3.6 b.y.K-Ar, Rb-Sr and Pb-Pb age obtained for Kanara Gneiss.
Older Metamorphics	1) Orthoamphibolites 2) Schists	Not dated but from field relation these are older. 3.2-3.6 b.y.

Acknowledgements: We are grateful to our teachers Dr.P.T.Hanamgond and Mr Suraj Mense and Mr Yogesh Kutre, for conducting this study tour.

Name:	Class: B.Sc.III Examination No.
Signature and Name of the staff:	
Dr.P.T.Hanamgond	Mr. Suraj S Mense

FIELD PHOTOGRAPHS



Description of field photos: 1. Isoclinal fold; 2. Boudin structure; 3. Ptygmatic folds; 4. Fault; 5. Sill; 6. Wave cut tunnel at Nadibag beach. 7. Oxidation and Precipitation of Copper (Malachite); and 8. Fault showing displacement of Pegmatite vein (Strike slip fault) at Majali (Tilmati beach) coast, Karwar.

**SKE SOCIETY'S
G.S.Sc. COLLEGE, BELGAUM**



REPORT

**GEOLOGICAL STUDY TOUR TO
MALVAN AND SURROUNDING PLACES OF
GEOLOGICAL INTEREST**

Date of visit 8-9th February 2019

**B.Sc. FOURTH SEMESTER
GEOLOGY (OPTIONAL)**



**SKE SOCIETY'S
G.S.Sc. COLLEGE, BELGAUM**



Department of Geology

CERTIFICATE

This is to certify that Mr/Miss. _____ of
B.Sc. IV Semester with Geology as optional subject has attended the
Geological Study Tour to **“Geological study tour to Malvan”** on **8-9th**
February 2019

Exam Seat No. _____

Date:

Head, Dept. of Geology

FIELD STUDY REPORT

Date of visit 8-9th February 2019

We the B.Sc.IV Semester students of Geology Department visited Malvan as a part of curriculum. We started our journey on 8th February morning and reached back on 9th night.

Geological Background of the Area:

Table 1. Stratigraphic sequence in Maharashtra (After Deshpande, 1998)

Stratigraphic Sequence	Age in million years	Representative rock formation	Geographic distribution
Recent - Pleistocene	0.01 – 1.65	Alluvium, laterite, sand, soils	Younger and older alluvia in Nagpur, Bhandara, Chandrapur, Wardha, Yavatmal, Akola, Amravati, Jalgaon Districts; Laterite in Kolhapur, Satara, Sangli, Kolaba and Thane districts. River terraces of Vainganga, Wardha and Painganga rivers; <u>raised beaches along west coast.</u>
Miocene- Pliocene	1.65 - 23.5	Tertiary sediments, lignite, shales	Ratnagiri and <u>Sindhudurg districts</u>
Eocene – Upper Cretaceous	34 - 135	Deccan Trap basalt flows with intertrappeans and infratrappeans (Lametas, Bagh beds)	<u>Basalt flows cover most of the state from west of Nagpur and Chandrapur up to the Arabian Sea coast</u> excepting in the eastern parts of Nagpur, Bhandara-Chandrapur, Gadchiroli, and Rathnagiri districts. Intertrappeans occur in Nagpur, Yavatmal and Chandrapur districts; Infratrappeans in parts of Nagpur and Chandrapur districts and Bagh beds in Dhule district.
Jurassic – Up Gondwana	135 - 300	Limestone Chikiala and Kota formations	Gadchiroli district and Achalpur Tahsil of Amravati district
Triassic	205 - 245	Clays and sandstones Pachmari & Maleri Fm.	Sironcha Tahsil, Gadchiroli district and Achalpur Tahsil of Amravati district
Permian	245 – 295	Sandstones and shales (Magli Fm.) Sandstones and shales (Kamthi Formation) Sandstones, shales and coal (Barakar Fm.)	Nagpur, Chandrapur and Yavatmal districts
Upper Carboniferous	295 - 360	Talchir Formation	Nagpur, Chandrapur and Yavatmal districts
Proterozoic	540 - 2500	Limestone, shales and sandstones (Vindhyan supergroup) Penganga beds, limestones and shales (Pakal Group) Conglomerates, sandstones and shales (Kaladgi Group)	Yavatmal and Chandrapur districts Gadchiroli district Rathnagiri and <u>Sindhudurg districts</u>
Archaean	2500 - 3500	Sausar group, Nandgaon group, Sakoli group, Amgaon Group, Unclassified Gneissess	Nagpur, Bhandara, Chandrapur, Gadchiroli, Rathnagiri and <u>Sindhudurg districts.</u> Bhandara district Nagpur, Bhandara, Chandrapur, Gadchiroli, Rathnagiri and <u>Sindhudurg districts.</u>

The geology of the area (Table 1) is quite well known- The important rock formations are **Proterozoic** sedimentary exposures probably extensions of

“**Kaladgis**”. These rocks are succeeding the Archaean rocks and overlain by Deccan traps. The quaternary and recent sediments are covering all these along the coast. The principal rock types include- orthoquartzite, sandstones, Granitic gneisses, banded hematite quartzite, varieties of schist, laterite and dykes. The granites occur from the sea level to a height of 30 meters and restricted mostly to the northern parts of Vengurla. The hilly regions of Pat and Parule in the North, the Vengurla and Mochamad hills in the central part of Vengurla area, Redi hill in the Southern region; and Parule-Malvan plateau regions indicate alteration and formation of residual deposits (Laterite). The Vengurla hill is structurally controlled. The Northern part of Vengurla near Kelus and the Southern part near Redi are all elevated regions, which are controlled by faulting. The rock garden of Malvan area is an example of tombolo effect. The entire Malvan city is having beach ridges (Hanamgond and Mitra, 2007).

Vast areas consisting of aluminous laterite are common in Sindhudurg District. The laterite tops, forming plateaus and tablelands between Redi and Malvan, is a significant feature. The overall topography is undulating.

The Aluminous rich laterite and ferruginous laterite are generally used as building materials, whereas the BHQs in southern region have given rise to valuable Iron ore deposits at Redi. Many mining companies have profitably exploited iron ore deposits here for a long period of time.

Geological and Geomorphological structures seen during the field study

On the way at Amboli Ghat we were shown the Nangar Taas water fall in a columnar basalt; basaltic flows, escarpments, valley etc along the Ghat section.

At Bhogwe beach, we were shown the coastal landforms such as wave cut platform (Photo 1), Coastal protection wall built with basaltic rocks and also learnt how unscientifically the authorities select such rocks without consulting Geologists. These rocks get weathered easily and the purpose of coastal erosion is lost. We were shown the rocky beach, sandy beach, beach with coastal protection wall, headlands, spit, estuary, pocket & estuarine beach etc. The important sedimentary structures observed along the beaches are- ripple marks (Photo 2), Rill/diamond marks, bioturbation marks etc.

At rock garden, we saw stratification (Photo 3), cross lamination, joints (Photo 4) etc. We visited Kolamb beach where in we could collect shells of Arca, Cyprea, Trochus, coral etc (Photo 5). We could observe Quaternary beach rock exposed along the Kolamb creek mouth (Photo 6) which is an evidence of sea level fall. We also saw coastal erosion of laterite cliff (Photo 7) and on the beach (Photo 8).

Acknowledgements: We are grateful to Dr.P.T.Hanamgond, Head; and Prof. Yogesh Kutre Lecturer, Dept of Geology for conducting this study tour and for the beautiful photographs. We thank GSS College for allowing us for this study tour.

References: Deshpande, G.G., 1998. Geology of Maharashtra, Geological Society of India, Text Book Series 10, 223 p.

Hanamgond P T and Mitra D., 2007. Evolution of Malvan Coast, Konkan, West Coast of India – A case study using Remote Sensing Data. Journal of Coastal Research, USA, V.24(3), pp 672-678.

Name:	Class: B.Sc. IV Semester
Examination No.:	
Signature and Name of the staff:	Dr.P.T.Hanamgond Mr. Yogesh M. Kutre

FIELD PHOTO DESCRIPTION

Field Photo 1: Lateritic shore platform at Bhogwa beach.

Field Photo 2: Ripple marks at Bhogwa beach.

Field Photo 3: Cross bedding at Rock Garden, Malvan.

Field Photo 4: Joints in Quartz-arenites, Rock Garden, Malvan

Field Photo 5: Collection of variety of sea shells of Lamellibranch and Gastropods

Field Photo 6: Exposure of Quaternary Beach rock at Kolamb Estuary.

Field Photo 7: Laterite cliff erosion with sea stack

Field Photo 8: Beach scarp, backshore and foreshore at Kolamb Beach.

FIELD PHOTOGRAPHS



**SKE SOCIETY'S
G.S.Sc. COLLEGE, BELGAUM**



REPORT

**GEOLOGICAL STUDY TOUR TO
MALVAN AND SURROUNDING PLACES OF
GEOLOGICAL INTEREST**

Date of visit 8-9th February 2019

**B.Sc. FOURTH SEMESTER
GEOLOGY (OPTIONAL)**



**SKE SOCIETY'S
G.S.Sc. COLLEGE, BELGAUM**



Department of Geology

CERTIFICATE

This is to certify that Mr/Miss. _____ of
B.Sc. IV Semester with Geology as optional subject has attended the
Geological Study Tour to **“Geological study tour to Malvan”** on **8-9th**
February 2019

Exam Seat No. _____

Date:

Head, Dept. of Geology

FIELD STUDY REPORT

Date of visit 8-9th February 2019

We the B.Sc.IV Semester students of Geology Department visited Malvan as a part of curriculum. We started our journey on 8th February morning and reached back on 9th night.

Geological Background of the Area:

Table 1. Stratigraphic sequence in Maharashtra (After Deshpande, 1998)

Stratigraphic Sequence	Age in million years	Representative rock formation	Geographic distribution
Recent - Pleistocene	0.01 – 1.65	Alluvium, laterite, sand, soils	Younger and older alluvia in Nagpur, Bhandara, Chandrapur, Wardha, Yavatmal, Akola, Amravati, Jalgaon Districts; Laterite in Kolhapur, Satara, Sangli, Kolaba and Thane districts. River terraces of Vainganga, Wardha and Painganga rivers; raised beaches along west coast.
Miocene- Pliocene	1.65 - 23.5	Tertiary sediments, lignite, shales	Ratnagiri and <u>Sindhudurg districts</u>
Eocene – Upper Cretaceous	34 - 135	Deccan Trap basalt flows with intertrappeans and infratrappeans (Lametas, Bagh beds)	Basalt flows cover most of the state from west of Nagpur and Chandrapur up to the Arabian Sea coast excepting in the eastern parts of Nagpur, Bhandara-Chandrapur, Gadchiroli, and Rathnagiri districts. Intertrappeans occur in Nagpur, Yavatmal and Chandrapur districts; Infratrappeans in parts of Nagpur and Chandrapur districts and Bagh beds in Dhule district.
Jurassic – Up Gondwana	135 - 300	Limestone Chikiala and Kota formations	Gadchiroli district and Achalpur Tahsil of Amravati district
Triassic	205 - 245	Clays and sandstones Pachmari & Maleri Fm.	Sironcha Tahsil, Gadchiroli district and Achalpur Tahsil of Amravati district
Permian	245 – 295	Sandstones and shales (Magli Fm.) Sandstones and shales (Kamthi Formation) Sandstones, shales and coal (Barakar Fm.)	Nagpur, Chandrapur and Yavatmal districts
Upper Carboniferous	295 - 360	Talchir Formation	Nagpur, Chandrapur and Yavatmal districts
Proterozoic	540 - 2500	Limestone, shales and sandstones (Vindhyan supergroup) Penganga beds, limestones and shales (Pakal Group) Conglomerates, sandstones and shales (Kaladgi Group)	Yavatmal and Chandrapur districts Gadchiroli district Rathnagiri and <u>Sindhudurg districts</u>
Archaean	2500 - 3500	Sausar group, Nandgaon group, Sakoli group, Amgaon Group, Unclassified Gneissess	Nagpur, Bhandara, Chandrapur, Gadchiroli, Rathnagiri and <u>Sindhudurg districts</u> . Bhandara district Nagpur, Bhandara, Chandrapur, Gadchiroli, Rathnagiri and <u>Sindhudurg districts</u> .

The geology of the area (Table 1) is quite well known- The important rock formations are **Proterozoic** sedimentary exposures probably extensions of

“**Kaladgis**”. These rocks are succeeding the Archaean rocks and overlain by Deccan traps. The quaternary and recent sediments are covering all these along the coast. The principal rock types include- orthoquartzite, sandstones, Granitic gneisses, banded hematite quartzite, varieties of schist, laterite and dykes. The granites occur from the sea level to a height of 30 meters and restricted mostly to the northern parts of Vengurla. The hilly regions of Pat and Parule in the North, the Vengurla and Mochemad hills in the central part of Vengurla area, Redi hill in the Southern region; and Parule-Malvan plateau regions indicate alteration and formation of residual deposits (Laterite). The Vengurla hill is structurally controlled. The Northern part of Vengurla near Kelus and the Southern part near Redi are all elevated regions, which are controlled by faulting. The rock garden of Malvan area is an example of tombolo effect. The entire Malvan city is having beach ridges (Hanamgond and Mitra, 2007).

Vast areas consisting of aluminous laterite are common in Sindhudurg District. The laterite tops, forming plateaus and tablelands between Redi and Malvan, is a significant feature. The overall topography is undulating.

The Aluminous rich laterite and ferruginous laterite are generally used as building materials, whereas the BHQs in southern region have given rise to valuable Iron ore deposits at Redi. Many mining companies have profitably exploited iron ore deposits here for a long period of time.

Geological and Geomorphological structures seen during the field study

On the way at Amboli Ghat we were shown the Nangar Taas water fall in a columnar basalt; basaltic flows, escarpments, valley etc along the Ghat section.

At Bhogwe beach, we were shown the coastal landforms such as wave cut platform (Photo 1), Coastal protection wall built with basaltic rocks and also learnt how unscientifically the authorities select such rocks without consulting Geologists. These rocks get weathered easily and the purpose of coastal erosion is lost. We were shown the rocky beach, sandy beach, beach with coastal protection wall, headlands, spit, estuary, pocket & estuarine beach etc. The important sedimentary structures observed along the beaches are- ripple marks (Photo 2), Rill/diamond marks, bioturbation marks etc.

At rock garden, we saw stratification (Photo 3), cross lamination, joints (Photo 4) etc. We visited Kolamb beach where in we could collect shells of Arca, Cyprea, Trochus, coral etc (Photo 5). We could observe Quaternary beach rock exposed along the Kolamb creek mouth (Photo 6) which is an evidence of sea level fall. We also saw coastal erosion of laterite cliff (Photo 7) and on the beach (Photo 8).

Acknowledgements: We are grateful to Dr.P.T.Hanamgond, Head; and Prof. Yogesh Kutre Lecturer, Dept of Geology for conducting this study tour and for the beautiful photographs. We thank GSS College for allowing us for this study tour.

References: Deshpande, G.G., 1998. Geology of Maharashtra, Geological Society of India, Text Book Series 10, 223 p.

Hanamgond P T and Mitra D., 2007. Evolution of Malvan Coast, Konkan, West Coast of India – A case study using Remote Sensing Data. Journal of Coastal Research, USA, V.24(3), pp 672-678.

Name:	Class: B.Sc. IV Semester
Examination No.:	
Signature and Name of the staff:	Dr.P.T.Hanamgond Mr. Yogesh M. Kutre

FIELD PHOTO DESCRIPTION

Field Photo 1: Lateritic shore platform at Bhogwa beach.

Field Photo 2: Ripple marks at Bhogwa beach.

Field Photo 3: Cross bedding at Rock Garden, Malvan.

Field Photo 4: Joints in Quartz-arenites, Rock Garden, Malvan

Field Photo 5: Collection of variety of sea shells of Lamellibranch and Gastropods

Field Photo 6: Exposure of Quaternary Beach rock at Kolamb Estuary.

Field Photo 7: Laterite cliff erosion with sea stack

Field Photo 8: Beach scarp, backshore and foreshore at Kolamb Beach.

FIELD PHOTOGRAPHS



**SKE SOCIETY'S
G.S.Sc. COLLEGE, BELGAUM**



REPORT

**GEOLOGICAL STUDY TOUR TO
PLACES OF GEOLOGICAL INTEREST
AROUND PONDICHERY**

Date of visit 5-11th March 2019

B.Sc. SIXTH SEMESTER
GEOLOGY (OPTIONAL)



**SKE SOCIETY'S
G.S.Sc. COLLEGE, BELGAUM**



Department of Geology

CERTIFICATE

This is to certify that Mr/Miss. _____ of

B.Sc. VI Semester with Geology as optional subject has attended the

Geological Study Tour to **“GEOLOGICAL STUDY TOUR TO PLACES OF**

GEOLOGICAL INTEREST AROUND PONDICHERY”

Exam Seat No. _____

Date:

Head, Dept. of Geology

FIELD STUDY REPORT

Date of visit 5-11th March 2019

We the B.Sc. VI Semester students of Geology Department visited Pondicherry and surrounding places of Geological interest, as a part of curriculum. We started our journey on 5th March morning by Puduchery Express and returned back on 11th night by Puduchery Express.

We reached Pondicherry on 6th morning. We visited botanical garden and the famous Aurbindo Ashram and the Pondicherry beach (which is protected by seawall). On 7th we hired a vehicle and visited the famous Geo-tourism place Thiruvakkarai Fossil wood park which is protected by Geological Survey of India.

Thiruvakkarai Fossil Wood Park:

Thiruvakkarai is situated about 40km to the NNE of the Neyveli lignite field exhibiting spectacular petrified tree trunks, embedded in coarse, pebbly and unsorted sandstones. We visited the fossil wood park protected by Geological Survey of India, where huge tree trunks and pieces are brought and kept. There are few insitu tree trunks too. Outside the park nearby fields are exposed with natural sites of petrified wood deposits covering may be about few square kilometres. We could collect some open specimens for our Geology Museum.

The occurrence of lignite in the lower horizon in Neyveli and petrified tree trunks in the higher horizon in Thiruvakkarai, both within Tertiary sediments suggest a well defined a drastic change in the environment of deposition of sediments admixed with abundant vegetal matter. The carbonization of the vegetation matter has led to formation of lignite owing to reduced environment with lack of oxygen. The silicification lit-per-lit transformation of wood to petrified wood is mainly due to availability of silica. It is known that in highly alkaline waters, with a pH exceeding 10 silica goes in to solution. The rise in the pH value, leading to higher alkalinity of waters is accomplished by the photosynthetic activity of algae or by sodium carbonate lavas. In Thiruvakkarai there pH

value of the water could be due to the presence of algae. The released silica replaced the organic matter of the tree trunks lit-per-lit or molecule by molecule.

Neyveli Lignite Mines:

On 8th March we had an opportunity to visit the Lignite mines at Neyveli, for which we had sought the permission earlier. Shri.Sampathkumar, Sr Geologist took us to various levels of mining and explained us in detail.

The lignite field extends over a distance of 40km in a N-S direction and is about 10km wide in an E-W direction. The lignite seam, varying in thickness from 8-22 m, is underlain by sands with artesian aquifers which exert an upward pressure (hydrostatic pressure). The lignite seam is overlain by argillaceous and ferruginous sandstones, clay and sands. The overburden above the lignite seam is about 55 m. These lignite bearing tertiary sediments of the Neyveli area have been for long considered to be of Mio-Pliocene age.

Lignite is a low grade, immature coal of low calorific fossil fuel (2000-3000 Kcal/ Kg), popularly known as Brown Diamond / brown coal. Lignite belongs to geologically younger member in coal family (i.e. tertiary age). Coal is the primary source of energy and become a cornerstone in power generation. In India, coal reserves (i.e. geological reserves) estimated 234 billion tones as on 1/1/2002 and produced 327.78 million tones during 2001-2002. Indian coal has high ash content ranges from 20 to 80% or more ash.

The lignite deposits of India mostly occurs as sub-surface deposits except in the states of Jammu and Kashmir, Gujarat and Kerala in Tertiary formations. The lignite occurs in a distinct and widely varying in nature, especially with regards to their lateral and vertical structured disposition, multiplicity of seams, quality, nature of occurrences, associated overburden and interburden formation, etc. The principal states of lignite deposits in India are Tamil Nadu, Rajasthan, Gujarat and Jammu and Kashmir.

The lignite treasure is buried 25 million years ago underneath a village, called Neyveli in the Cuddalore district, Tamil Nadu. The Neyveli lignite deposits occur at shallow depth of 50 to 120 m below ground level (bgl). It is the biggest source of lignite in India, which is fully exploited mainly for electricity generation and also used in Briquetting and Carbonization plants and Urea manufacturing. The Neyveli Lignite Field is spread over an area of about 480.00 sq. Km. and total geological reserves estimated to be about 3300.00 million tones. Lignite deposits at Neyveli occur in a single seam with an average

thickness of 14.00 m. The Neyveli mine is one of the Asia's largest open cast lignite mine and produce 18.36 million tones of lignite during 2001- 2002.

We visited the Mine II open cast mines. It is located 5 km south of mine-I, spread over an area of 27.74 sq. Km with 398MT of lignite reserves. The Mine-II was opened in 1981 with a capacity of 4.70MTAr linked to Thermal Power Plant-II (TPS-11) with a capacity of 630 MW. The total current production at Mine II is given in table.

On 9th we visited the famous historical and the ruined archaeological wonder Mahabalipuram. On 10th we visited the Pondicherry beach, and returned by Puducherry express on 11th to Belgaum.

Acknowledgements: We are grateful to Dr.P.T.Hanamgond, Head; and Prof. Suraj S Mense, Lecturer, Dept of Geology for conducting this study tour. We thank GSS College for allowing us for this study tour.

References:

Name:	Class: B.Sc. VI Semester
Examination No.:	
Signature and Name of the staff:	Dr.P.T.Hanamgond Mr. Suraj S Mense

FIELD PHOTO DESCRIPTION

Photos 1-3 Thiruvakkarai fossil wood park.

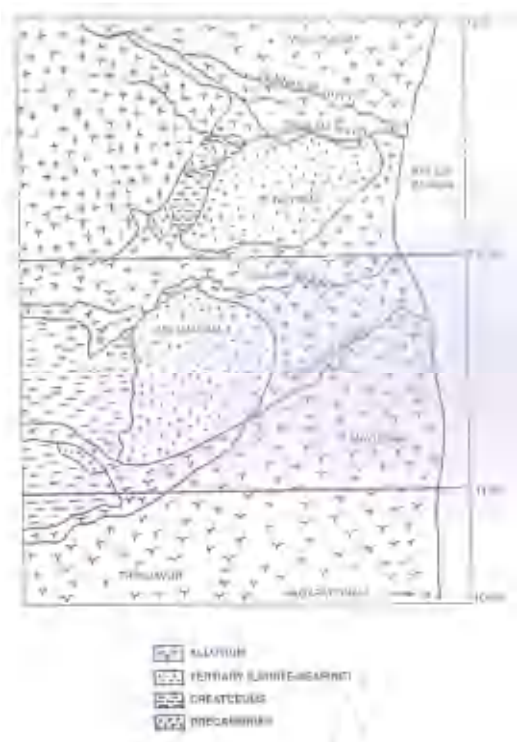
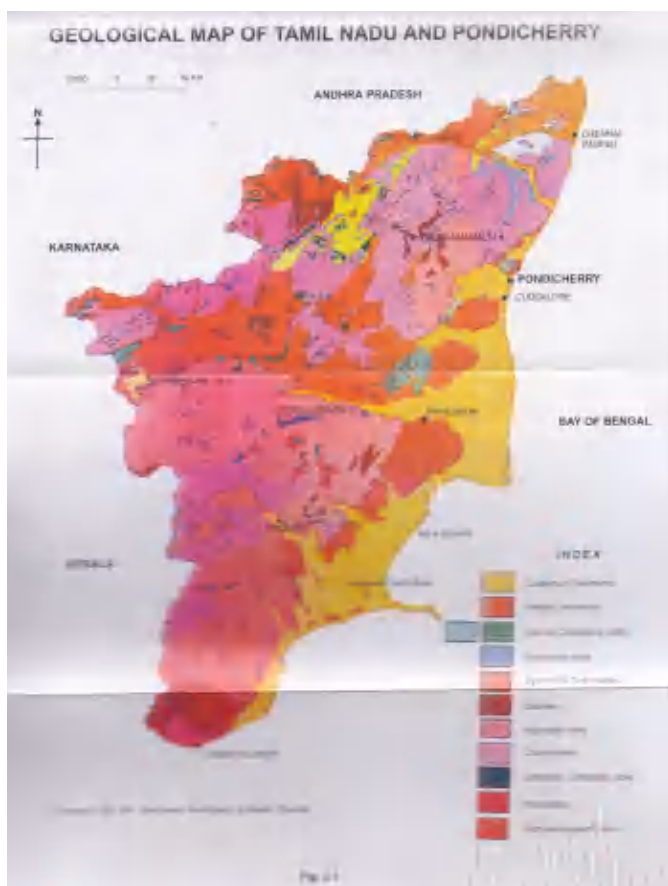
Photo 4 Auroville Golden Globe peace centre, Pondicherry.

Photos 5-8 Students visit to Department of Earth Sciences, Pondicherry University.

Photos 9-13 Visit to Neyeli Lignite Mines

Photo 14 TANCEM Fossiliferous Limestone Mines, Ariyalur

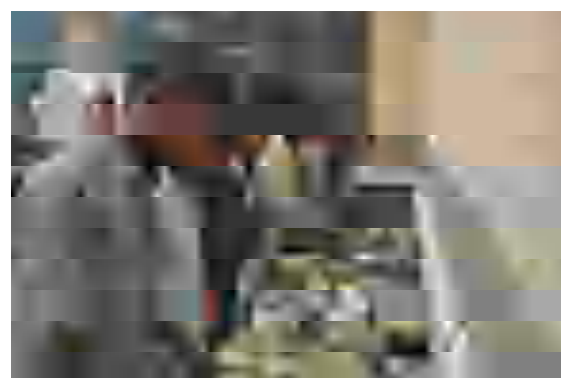
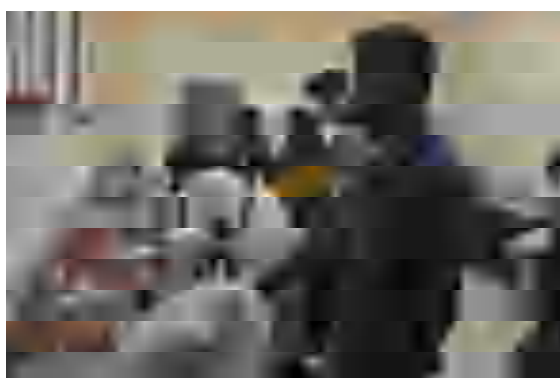
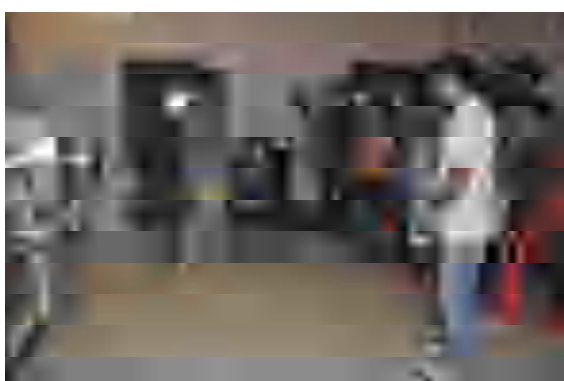
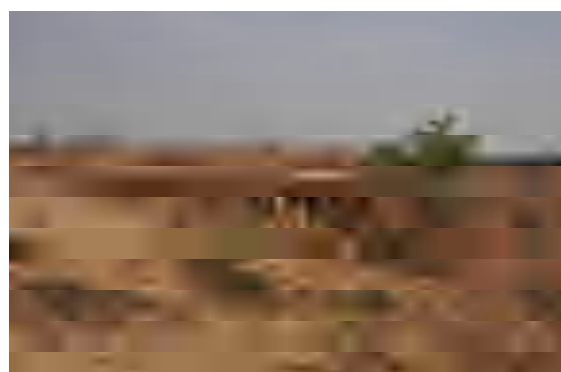
Photos 15-16 Visit to Mahabalipuram.



Geological map around Neyveli

MINE-II Production Details 18-03-2019				
	Output	Mon	Quart	Yearly
OB	252000	41.52	177.20	779.09
SME Lignite	42500.00			
SMD Lignite	10440.57			
Total Lignite	52940.57	9.37	37.48	118.90
TS-2 Supply	19000.00			
TS-2 Expn-Supp	0.00			
Total Supply	19000.00	6.70	31.03	181.30
Mine-2 Stock	2000001.53			
TS-2 Stock	106949.07	Mag	19x28	
TS-2 Expn Stock	73077.58			
TS-2 Gen	882/1470	7x116	MU	23.45
TS-2 Expn Gen	0		MU	
OS OB	1332/30640			
OS LIG	893/10440.57			
Max-Pain Fall		Nil		
Obest (M/C/L)	12063	SMD/AUP 5000		31.1277
Scarp	49.26		Cum	7393.664

FIELD PHOTOGRAPHS



ERROR: ioerror
OFFENDING COMMAND: image

STACK:

**SKE SOCIETY'S
G.S.Sc. COLLEGE, BELAGAVI**

REPORT OF

**GEOLOGICAL STUDY TOUR AROUND
JODHPUR-JAISELMER-UDAIPUR AND
MT. ABU OF RAJASTHAN**

Date of visit from 3rd to 15th January 2017

B.Sc. SIXTH SEMESTER
GEOLOGY (OPTIONAL)



**SKE SOCIETY'S
G.S.Sc. COLLEGE, BELAGAVI**

Department of Geology

CERTIFICATE

This is to certify that Mr/Miss. _____ of B.Sc.
VI Semester with Geology as optional subject has attended the Geological Study Tour
around **“Jodhpur-Jaiselmer-Udaipur and Mt. Abu of Rajasthan”** from **3rd to 15th**
January 2017.

Exam Seat No. _____

Date:

Head, Dept. of Geology

GEOLOGICAL STUDY TOUR AROUND JODHPUR-JAISALMER-UDAIPUR AND MT. ABU OF RAJASTHAN

STUDY TOUR REPORT

As a part of curriculum, a study tour to Rajasthan, especially to Jodhpur, Jaisalmer, Udaipur & Mount Abu was conducted. We started our journey from Belgaum by train on 3 Jan, 2017 morning to Jodhpur and returned on 15 Jan, 2017 morning. Following is the details of our study tour.

Jodhpur:

We reached Jodhpur on 4 January 2017. We visited local geological places of interest such as sandstone mines at the outskirts of Jodhpur where in we could see variety of ripple marks (Photo 1), cutting & polishing units (Photo 2); Mehrangarh fort which is built with red sandstone, Ummaidbhavan which is also built by red sandstone.

Jaisalmer:

On 6-7th we visited Jaisalmer. We visited Tanot Mata mandir which is located near Indo-pak border. On the way, we trekked on the desert pavements, collected fossiliferous limestone samples (Photo 3); we visited Habur which is famous for red fossiliferous limestone. We visited Sam Dunes (Photo 4) wherein we could see longitudinal dunes, barchan dunes, ripple structures etc. The sand dunes covered a vast area and watching the desert landscape was a wonderful experience. On 7th we visited Kuldhara village ruins and we collected Ammonite (Ammonite/Ceratite, Belemnites) and Brachiopod (Rhynchonella) fossils along the Kuldhara River valley (Photo 5),. We visited the famous Fossil Wood Park at Akkal, while returning to Jodhpur (Photos 6). Akkal Fossil woods are thought to be formed about 180 my ago during Jurassic period.

Udaipur:

We reached Udaipur on 8th evening. We visited the Udaipur City Palace and some Jain temples built by marble and sandstone. We visited Geology Department of MS University, Udaipur. We could see the Geology Museum which has vast collection of rocks, minerals, gemstones and fossils (Photo 7).

Ranakpur:

On 10th we visited the wonderful Ranakpur Jain temple built with marble. The temple is known for its delicate and carving and architect grandeur and fine art (Photo 8). On our way back we visited the Kumbhalgarh Fort, one of the longest fort walls in India. On the way we could see variety of dykes, quartz and feldspar veins (Photos 9-12).

Mount abu

On 12th we started our journey to Mt.Abu. On the way to Mt.Abu, we could see many geological structures (fold, dykes, multiple intrusions etc) along the road

cuttings. Mt. Abu is a part of the Aravalli hill ranges located in Sirohi district, is situated at 1290 meters above mean sea level, with a plateau of 16 km in length and 3 – 6 km in width. The Gurushikhar is the highest hillock in this range raging about 5653 km above msl. The rocks of this hill range are mainly, quartzite, greenstone schist, mica schist, gneiss, limestone, marble etc. The serpentine elevating road leading to Mt. Abu, shows high peaks of gneissic and schist rocks.

The huge batholith of Mt. Abu is almost entirely composed of Erinpura Granite (Coulson, 1933). The massif of Mt. Abu is long and narrow and is parallel to the tectonic axis of the Aravali Mountains, which trend NNE-SSW. The granite occurring in this vicinity is a grey colored, coarse grained and shows well marked foliation. However, according to Coulson (1933), it is hornblende gneiss. The rock consists of microcline quartz, plagioclase and biotite. The grey granite gradually grades into pink granite-gneiss from Abu Bazar to sunset point. The micaceous minerals from these rocks have been weathered chemically forming many caves in this area (Photo 13).

We had an opportunity to learn the physiographic of the region along the way like valleys, gorges, weathering effects, spurs, drainage patterns, multiple intrusions, mega joints, chemical leaching/erosion effects leading to rock undercutting forming caves of various sizes. At places, the road protection walls for landslides have been built with warning signboards.

Around Mt. Abu, we visited the famous Nakki Lake (Photo 14), the world famous Dilwara Jain Temples known for their excellent, delicately carved architecture in marble, which are of 11th and 12th centuries rightly been called “a dream in Marble”. Dilwara temples are a composite cluster of 5 temples. The rocks around Dilwara are made up of grey colored augen gneiss. Large augens of K-felspar, are seen set between biotitic bands which wrap around these augens.

We also visited Achalgarh, well known for fort and Achaleshwar temple situated at 4000 ft. high above msl. This is further north from Dilwara. The augen-gneissic rocks grade into a coarse granite which eventually pass into a fine grained massive granite with blue quartz.

Further north, we visited Guru Shikhar, the loftiest peak of Mt. Abu, is about 15 Km. from Mt. Abu. The place is known for Guru Dattatreya and his footprints are sanctified here in a rock cave. This hill consists of porphyroblastic granite with large anhedral porphyroblasts of perthite set in a finer matrix consisting of quartz and feldspars. The geological significance of this hill range is that, according to M.S.Krishnan (1982), Aravallis are thought to constitute a true tectonic range.

An effort was also made to identify the important features on land using google earth images; the same have been enclosed separately as pages 7-9.

Acknowledgements: We are grateful to Dr.P.T.Hanamgond, Head; and Prof. Suraj Mense of Geology department, for conducting this study tour. We also thank Prof.A.K.Mense, Principal, for allowing us for this study tour.

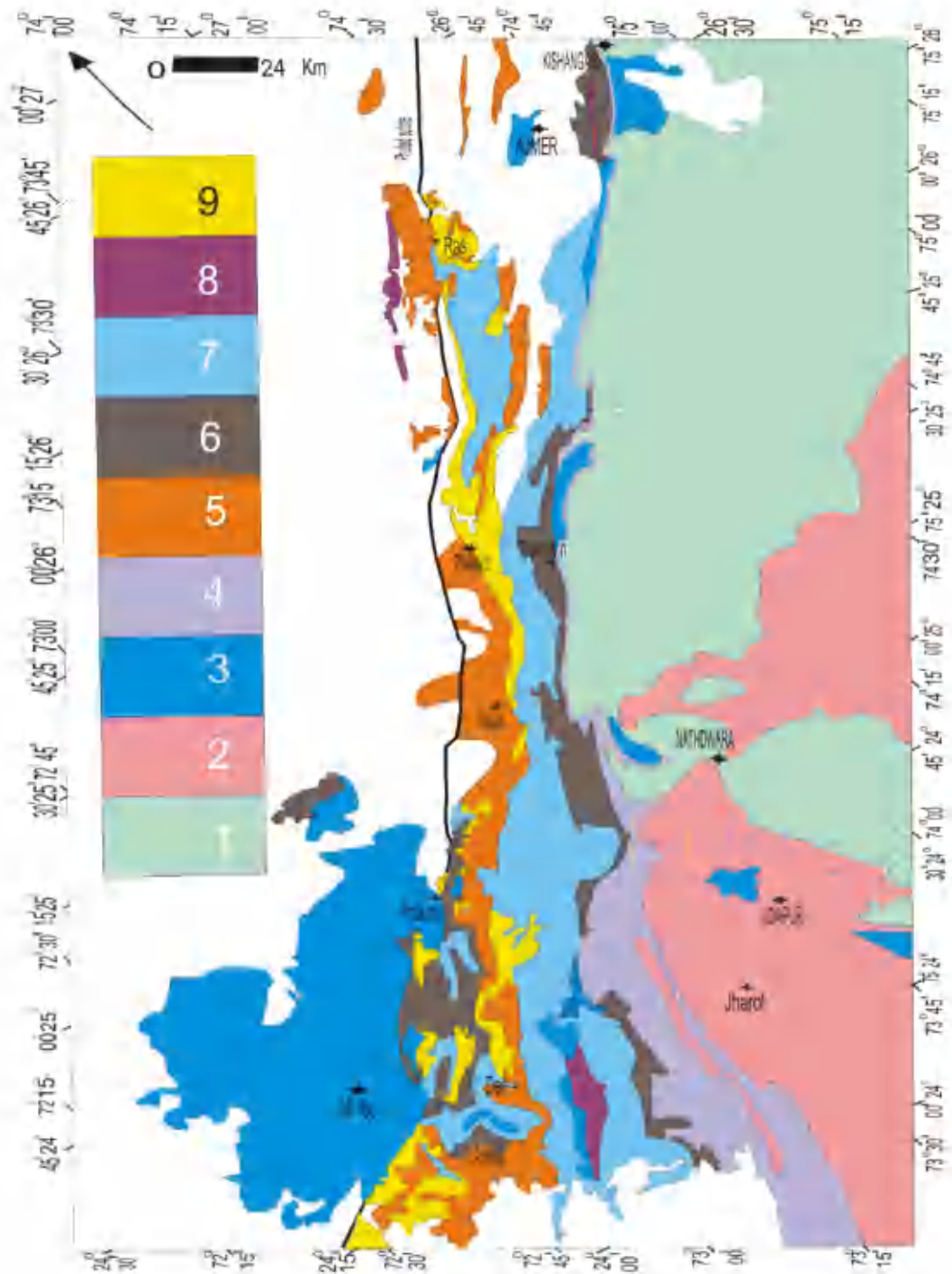


Figure 1. Geological map of Aravalli mountain range (After Sychanthavong and Merh, 1984). 1 – Banded Gneissic Complex; 2 – Aravalli Supergroup; 3- Pre and post Delhi Granites; 4- Gogunda Group; 5- Kumbhalgarh Pelitic Gneisses and Granulites; 6- Kumbalgarh Pelitic Gneisses and Schist; 7- Kumbalgarh Calc Gneiss; 8 – Kumbalgarh marbles; and 9 – Phulad Ophiolite

Field Photographs



RIPPLE STRUCTURE AT JODHPUR



SANDSTONE QUARRY AT JODHPUR



Trek in the Desert Pavement for fossil collection



SAM DUNES AT JAISELMER



FOSSIL COLLECTION AT KULDHARA, JAISELMER



AKKAL FOSSILWOOD PARK



GEOLOGY MUSEUM UDAIPUR UNIVERSITY



RANAKPUR JAIN TEMPLE



FIELD OBSERVATION ON WAY TO RANKAPUR

9



10

DYKE SHOWING LADDER VEINS



11

PTYGMATIC FOLDING AT KUMBHALGARH



12

PEGMATITE INTRUSION



13

CAVERNS IN GRANITE



NAKKI LAKE MT. ABU

14

JAISELMER SATELLITE PICTURES WITH GROUND TRUTH SIGNATURES



SAM DUNES: GOOGLE EARTH



JAISELMER FORT: GOOGLE EARTH



JAISELMER FORT: GOOGLE EARTH



GOLDEN FORT JAISELMER

KUMBHALGARH AND UDAIPUR SATELLITE PICTURES WITH GROUND TRUTH SIGNATURES



KUMBHALGARH FORT: GOOGLE EARTH



KUMBHALGARH FORT

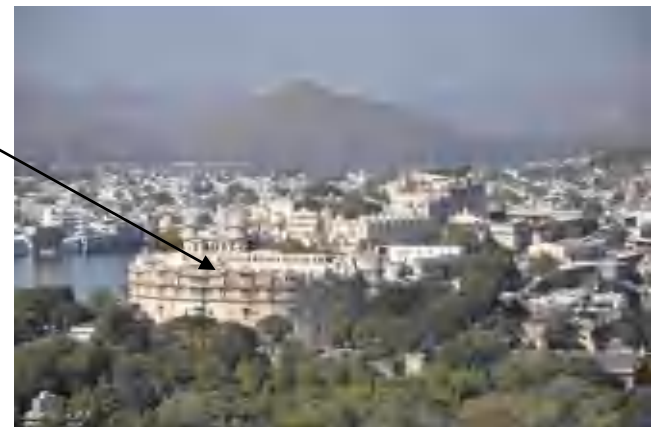


VIEW OF KUMBHALGARH FORT WALL



PICHORA LAKE WITH CITY PALACE, UDAIPUR

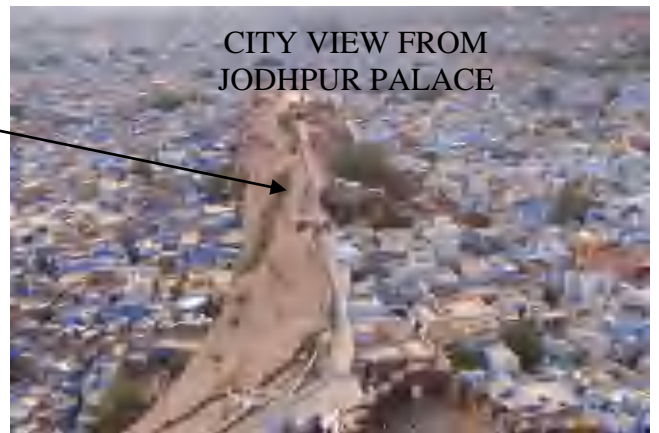
UDAIPUR PICHORA LAKE: GOOGLE EARTH



JODHPUR SATELLITE PICTURES WITH GROUND TRUTH SIGNATURES



MEHRANGARH FORT HILL: GOOGLE EARTH



UMMAID BHAVAN: GOOGLE EARTH



Name:	Class: B.Sc. VI Sem
Signature and Name of the staff:	Examination No.:
Dr.P.T.Hanamgond	
Prof. S.S. Mense	

**SKE SOCIETY'S
G.S.Sc. COLLEGE, BELGAUM**



REPORT

**GEOLOGICAL STUDY TOUR TO
RATNAGIRI, MAHARASHTRA AND
SURROUNDING PLACES OF GEOLOGICAL
INTEREST**

Date of visit 21-24th February 2020

**B.Sc. SIXTH SEMESTER
GEOLOGY (OPTIONAL)**



**SKE SOCIETY'S
G.S.Sc. COLLEGE, BELGAUM**



Department of Geology

CERTIFICATE

This is to certify that Mr/Miss. _____ of
B.Sc. IV Semester with Geology as optional subject has attended the
Geological Study Tour to **“Geological study tour to Ratnagiri,
Maharashtra, and surrounding places of Geological interest ”** on **21-24th
February 2020**

Exam Seat No. _____

Date:

Head, Dept. of Geology

FIELD STUDY REPORT

Date of visit 21-24th February 2020

We the B.Sc.VI Semester students of Geology Department visited Ratnagiri as a part of curriculum. We started our journey on 20th February evening and reached back on 25th morning.

Geological Background of the Area:

Table 1. Stratigraphic sequence in Maharashtra (After Deshpande, 1998)

Stratigraphic Sequence	Age in million years	Representative rock formation	Geographic distribution
Recent - Pleistocene	0.01 – 1.65	Alluvium, laterite, sand, soils	Younger and older alluvia in Nagpur, Bhandara, Chandrapur, Wardha, Yavatmal, Akola, Amravati, Jalgaon Districts; Laterite in Kolhapur, Satara, Sangli, Kolaba and Thane districts. River terraces of Vainganga, Wardha and Painganga rivers; <u>raised beaches along west coast.</u>
Miocene- Pliocene	1.65 - 23.5	Tertiary sediments, lignite, shales	Ratnagiri and <u>Sindhudurg districts</u>
Eocene – Upper Cretaceous	34 - 135	Deccan Trap basalt flows with intertrappeans and infratrappeans (Lametas, Bagh beds)	<u>Basalt flows cover most of the state from west of Nagpur and Chandrapur up to the Arabian Sea coast</u> excepting in the eastern parts of Nagpur, Bhandara-Chandrapur, Gadchiroli, and Rathnagiri districts. Intertrappeans occur in Nagpur, Yavatmal and Chandrapur districts; Infratrappeans in parts of Nagpur and Chandrapur districts and <u>Bagh beds in Dhule district.</u>
Jurassic – Up Gondwana	135 - 300	Limestone Chikiala and Kota formations	Gadchiroli district and Achalpur Tahsil of Amravati district
Triassic	205 - 245	Clays and sandstones Pachmari & Maleri Fm.	Sironcha Tahsil, Gadchiroli district and Achalpur Tahsil of Amravati district
Permian	245 – 295	Sandstones and shales (Magli Fm.) Sandstones and shales (Kamthi Formation) Sandstones, shales and coal (Barakar Fm.)	Nagpur, Chandrapur and Yavatmal districts
Upper Carboniferous	295 - 360	Talchir Formation	Nagpur, Chandrapur and Yavatmal districts
Proterozoic	540 - 2500	Limestone, shales and sandstones (Vindhyan supergroup) Penganga beds, limestones and shales (Pakal Group) Conglomerates, sandstones and shales (Kaladgi Group)	Yavatmal and Chandrapur districts Gadchiroli district Rathnagiri and <u>Sindhudurg districts</u>
Archaean	2500 - 3500	Sausar group, Nandgaon group, Sakoli group, Amgaon Group, Unclassified Gneissess	Nagpur, Bhandara, Chandrapur, Gadchiroli, Rathnagiri and <u>Sindhudurg districts.</u> Bhandara district Nagpur, Bhandara, Chandrapur, Gadchiroli, Rathnagiri and <u>Sindhudurg districts.</u>

The geology of the area (Table 1) is quite well known- The important rock formations are **Proterozoic** sedimentary exposures probably extensions of

“**Kaladgis**”. These rocks are succeeding the Archaean rocks and overlain by Deccan traps. The quaternary and recent sediments are covering all these along the coast. The principal rock types include- orthoquartzite, sandstones, Granitic gneisses, banded hematite quartzite, varieties of schist, laterite and dykes. The granites occur from the sea level to a height of 30 meters and restricted mostly to the northern parts of Vengurla. The hilly regions of Pat and Parule in the North, the Vengurla and Mochamad hills in the central part of Vengurla area, Redi hill in the Southern region; and Parule-Malvan plateau regions indicate alteration and formation of residual deposits (Laterite). The Vengurla hill is structurally controlled. The Northern part of Vengurla near Kelus and the Southern part near Redi are all elevated regions, which are controlled by faulting. The rock garden of Malvan area is an example of tombolo effect. The entire Malvan city is having beach ridges (Hanamgond and Mitra, 2007).

Vast areas consisting of aluminous laterite are common in Sindhudurg District. The laterite tops, forming plateaus and tablelands between Redi and Malvan, is a significant feature. The overall topography is undulating.

The Aluminous rich laterite and ferruginous laterite are generally used as building materials, whereas the BHQs in southern region have given rise to valuable Iron ore deposits at Redi. Many mining companies have profitably exploited iron ore deposits here for a long period of time.

Geological and Geomorphological structures seen during the field study

On first day 21st afternoon we visited Ratnagiri fort cave and had the cave trekking with the help of Ratnadurga Mountaineering club, where we were shown the coastal erosion such as wave cut tunnel, cliffs, wave cut platform, coastal protection wall, bat habitat in wave cut cave and seepage effect. On 22nd we visited Oni Sand mine and water fall. At Oni sandstone mine we could see ripple structure and mud crack structures imprinted on sandstone. The weathering of sandstone is quite high which has given rise to sand for construction and glass industry. On 23 we visited local beaches and we were shown various coastal landforms such as beach, estuary/river mouth, headland, island, tombolo, spit, bars, wave action, longshore currents, formation of ripple structures, rill structures, placer mineral deposits, Alveolar structure etc. Afternoon we took a boat ride to mangrove island in Bhatye estuary, where we could see clumps of mangrove vegetation, mud flat deposits etc. On 24th on our return journey we visited the Geography department of Gogte College where we were introduced to topomaps, landforms study etc., and later ancient sculptures on laterite plateau. We reached Belgaum on 25th early morning.

Acknowledgements: We are grateful to Dr.P.T.Hanamgond, Head; and Prof. Yogesh Kutre Lecturer, Dept of Geology for conducting this study tour and for the beautiful photographs. We thank Dr Surendra Thakurdesai, Geography Department, Rathnagiri. for his guidance.

References: Deshpande, G.G., 1998. Geology of Maharashtra, Geological Society of India, Text Book Series 10, 223 p.

Hanamgond P T and Mitra D., 2007. Evolution of Malvan Coast, Konkan, West Coast of India – A case study using Remote Sensing Data. Journal of Coastal Research, USA, V.24(3), pp 672-678.

Name:	Class: B.Sc. VI Semester
Examination No.:	
Signature and Name of the staff:	Dr.P.T.Hanamgond Mr. Yogesh M. Kutre

FIELD PHOTO DESCRIPTION

Field Photo 1: Lateritic shore platform at Bhogwa beach.

Field Photo 2: Ripple marks at Bhogwa beach.

Field Photo 3: Cross bedding at Rock Garden, Malvan.

Field Photo 4: Joints in Quartz-arenites, Rock Garden, Malvan

Field Photo 5: Collection of variety of sea shells of Lamellibranch and Gastropods

Field Photo 6: Exposure of Quaternary Beach rock at Kolamb Estuary.

Field Photo 7: Laterite cliff erosion with sea stack

Field Photo 8: Beach scarp, backshore and foreshore at Kolamb Beach.

FIELD PHOTOGRAPHS



G. S. S. College, Belgaum

DEPARTMENT OF BOTANY AND ZOOLOGY (UG and PG)

STUDY TOUR PHOTOS 2015-2021



Place of visit: Radhanagri, Sawantwadi, Shiroda, Amboli and Dajipur

Date: 23rd and 24th September 2016



Place of visit: Chigule, Delta, Chorla and Habbanatti

Date: 10th to 11th March 2018



Place of visit: Amboli, Shiroda, Malvan, Sindhudarg, Tiracol and
Date: 23rd March 2019



Place of visit: Vaccine Depot

Date: 21st to 23rd February 2019



Place of visit: Londha and nearby areas

Date: 25th August 2019



Place of visit: Chorla ghat and nearby areas

Date: 26th to 27th September 2019



Place of visit: Radhanagari, Malvan, Dajipur,
Date: 9 to 11 September 2018.



Place of visit: Londa
Date: 07th November 2015



Place of visit: Shiroda, Malavan
Date: 10th and 12th November 2017



Place of visit: Anshi National park, Ulavi, kulagi
Date: 19th to 20th April 2017



Place of visit: NIO, Goa, Anshi National park, Ulavi, kulagi,
Date: 26th to 28th April 2019



Place of visit: Amboli, Shiroda.
Date: 23rd to 25th October 2019



Place of visit: Dajipur wildlife sanctuary
Date: 13th to 15th February 2020



Place of visit: Dajipur wildlife sanctuary
Date: 4th to 6th February 2021



**SKE SOCIETY'S
G.S.Sc. College, Belgaum**

**GEOLOGICAL STUDY TOUR TO
ULAVI CAVES**

FIELD REPORT

Date of visit Thursday, 24 February 2019

**B.Sc. SECOND SEMESTER
GEOLOGY (OPTIONAL)**



**SKE SOCIETY'S
G.S.Sc. College, Belgaum**

Department of Geology

CERTIFICATE

This is to certify that Mr/Miss. _____ of
B.Sc. II Semester with Geology as optional subject has attended the
Geological Study Tour to “**Ulavi Caves**” on 24 February 2019.

Exam Seat No. _____

Date:

Head, Dept. of Geology

GSS COLLEGE, DEPARTMENT OF GEOLOGY
GEOLOGICAL STUDY TOUR TO ULAVI CAVES

STUDY TOUR REPORT

Date of visit 24 February 2019

(We started our journey at 8.0 am and returned at 10 pm)

We the B.Sc. II sem students of Geology Department, were taken to Sintheri Rock and Ulavi caves as a part of curriculum. Sintheri Rock is well known for huge rock cliff and water fall (Photo A). Ulavi is well known for the Channabasaveshwara temple. The place is known for its historical aspects. Geologically the area is well known for Karst topography (limestone caves) and huge rock cliffs. The rock formations are mainly of crystalline limestone with chert/silica bands. There are numerous caves carved out of cracks and chemical weathering due to water action, showing beautiful stalactites and stalagmites, which is a geologists and speleologists' paradise. We were taken to several of these caves and cliffs made of crystalline limestone. Mahamane Gavi, is located about 8km and is the farthest of the caves in the dense forest. Akka Nagamma cave (Photo B) is situated on the way to Akalgavi, where two entrances one goes steep below the underground, where the other is at shallow level. Here too beautiful stalactites and beds formed due to leaching are seen. At Akka Nagamma Cave, we could observe Anticlinal fold with plunge towards north. Vibhuti Mantapa cave is situated further on the left side is quite huge, where one can walk in easily. Here we could see huge stalagmite that has joined the roof making it a column (Photos C-F).

Aakalu Gavi, is one of the famous, the limestone rock cliff here is about 800 ft tall and the cave is situated about 50 ft above the ground (Photo G), and a ladder is kept to reach the cave. Here, one need to crawl through the narrow mouth of the cave. The beautiful stalactites are observed in this cave. The stalactites look like a cow's mamillary glands (Photo H). .

All these caves show the effect of weathering by plants and water action on limestone.

We were shown sedimentary structures such as bedding, folding, differential weathering, elephant skin weathering, etc and the use of Brunton compass and GPS in the field.

Name:	Class: B.Sc. II Sem Examination No.:
Signature and Name of the staff: Dr.P.T.Hanamgond	
Prof. S.S.Mense	
Prof. Y.M.Kutre	

Description of Field Photographs

- A. Sintheri Rock Water fall showing folded struture
- B. Akka Nagamma Cave showing fold and plunge.
- C. & E. Shows huge Stalagmite at Vibhuti Kanaja Cave.
- F. & H. Akalgavi Cave and Stalactite structures.

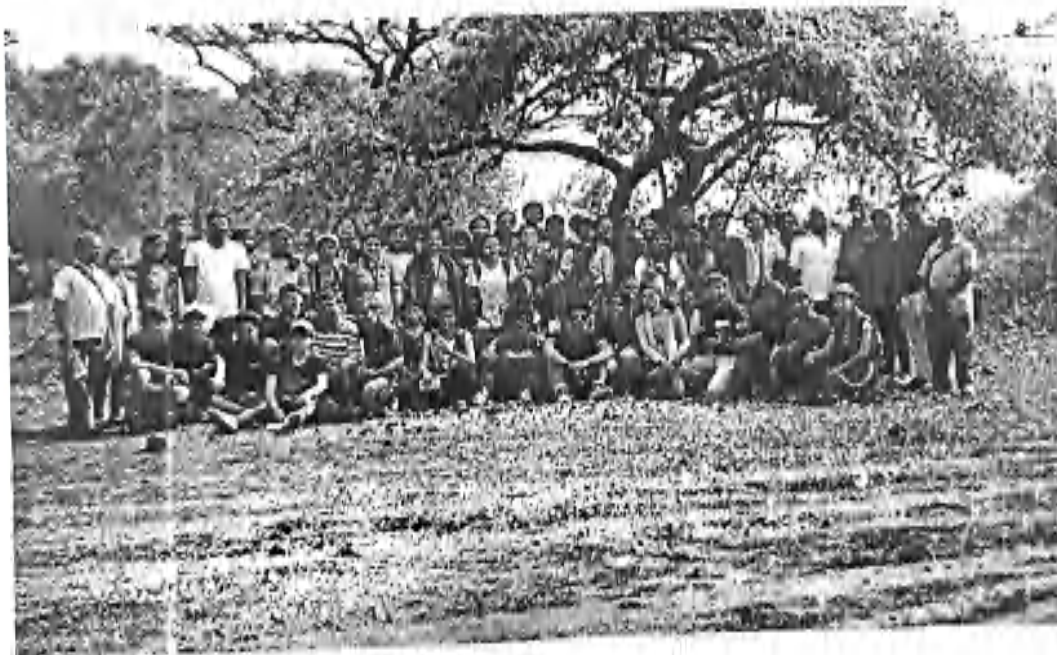
Field Photographs



G. S. S. College, Belgaum
DEPARTMENT OF BOTANY AND ZOOLOGY (UG and PG)
STUDY TOUR PHOTOS 2015-2021



Place of visit: Radhanagri, Sawantwadi, Shiroda, Amboli and Dajipur
Date: 23rd and 24th September 2016



Place of visit: Chigule, Delta, Chorla and Habbanatti
Date: 10th to 11th March 2018


IQAC Co-ordinator
GSS College, Belagavi


Principal
G. S. Sc. College, Belagavi



Place of visit: Amboli, Shiroda, Malvan, Sindhudarg, Tiracol and
Date: 23rd March 2019



Place of visit: Vaccine Depot

Date: 21st to 23rd February 2019


IQAC Co-ordinator
GSS College, Belagavi


Principal
G. S. Sc. College, Belagavi



Place of visit: Londha and nearby areas
Date: 25th August 2019



Place of visit: Chorla ghat and nearby areas
Date: 26th to 27th September 2019


IQAC Co-ordinator
GSS College, Belagavi


Principal
G. S. Sc. College, Belagavi



Place of visit: Radhanagari, Malvan, Dajipur,
Date: 9 to 11 September 2018.



Place of visit: Londa
Date: 07th November 2015


IQAC Co-ordinator
GSS College, Belagavi


Principal
G. S. Sc. College, Belagavi



Place of visit: Shiroda, Malavan
Date: 10th and 12th November 2017



Place of visit: Anshi National park, Ulavi, kulagi
Date: 19th to 20th April 2017


Co-ordinator
JSS College, Belagavi


Principal
G. S. Sc. College, Bela



Place of visit: NIO, Goa, Anshi National park, Ulavi, kulagi,
Date: 26th to 28th April 2019



Place of visit: Amboli, Shiroda,
Date: 23rd to 25th October 2019


IQAC Co-ordinator
G9S College, Belagavi


Principal
G. S. Sc. College, Belagavi



Place of visit: Dajipur wildlife sanctuary

Date: 13th to 15th February 2020



Place of visit: Dajipur wildlife sanctuary

Date: 4th to 6th February 2021


IQAC Co-ordinator
GSS College, Belagavi


Principal
G. S. Sc. College, Belagavi

G S S COLLEGE, BELAGAVI.**LIST OF STUDENTS UNDERTAKING FIELD WORK/PROJECT WORK/ INTERSHIP**

SL. NO.	NAME	REG NO
PCM		
1	DEEPA BHOI	S1719619
2	NEHA D SURYAVANSHI	S1714161
3	AKSHATA N GHADI	S1714027
4	KAJAL BHASKAR	S1714102
5	AMITA MARUTI GURAV	S1714032
6	VUJAYA NAGESH NAVAGEKAR	S1714338
7	MAHIMA M KAMMAR	S1714141
8	PRATIKSHA VASUDEV TINEKAR	S1714200
9	SANGEETA PATIL	S1714255
10	MALAPRABHA MOHAN PATIL	S1714142
11	SWATI GURAV	S1714325
12	ASHWINI DATTU KAVALEKAR	S1714044
13	YOGITA PATIL	S1714359
14	SHIVANI SADASHIV DHARWADKAR	S1714273
15	SAKSHI S BHATE	S1714249
16	BHARATI MARUTI BAGI	S1714054
17	AKSHATA NAGAPPA NINGOJI	S1714028
18	TRUPTHI SIDRAM BHARAMANNAIKAR	S1714329
19	SABAARNAZ MOHD JAHANGIR SHAIKH	S1714241
20	DHANASHREE PRAKASH MUSALE	S1714071
21	POOJA GAJANAN JITTURI	S1714182
22	SAWAN LAUD	S1714263
23	SUBRAMANYA SANTABA JADHAV	S1714312
24	SAMIKSH MAHESH CHOUGULE	S1714252
25	SONAL ANANT TIRVIR	S1714299
26	SAYALI PRAKASH KUMBHAR	S1714264
27	NIRMALA NANDYALKAR	S1714172
28	POOJA KOLEKAR	S1714183
29	JAGADISH JOTIBA BIRJE	S1714090
30	AKASH KIRAN PATIL	S1714015
31	VINOD SHANKAR DALAVI	S1714342
32	RANJEET RATNAKAR PATIL	S1714226
33	HRISHIKESH NIVRUTI PATIL	S1714088
34	PRANALI P PAWAR	S1714195
35	AISHWARYA MASEKAR	S1714006
36	AKSHATA KOLIK	S1714026
37	NIKITA BHAU BHATKANDE	S1714167
38	NIKITA BALKRISHNA MALAI	S1714166
39	VIJAYANTI VASANT DESAI	S1714331
40	ANITA DANGI	S1714036
41	ROOPA BETGAVADE	S1714235
42	AISHWARYA DESAI	S1714004
43	AKSHATA DADOBA DESAI	S1714022
44	SONALI PRAKASH NILAJKAR	S1714302

45	POONAM RAMU WAGALEKAR	S1714188
46	NIKHIL HEGGANAİK	S1714164
47	AKASH ASHOK CHANNAPPANDOR	S1714012
48	SUSHMITA ADIVAPPA KADAGOUDAR	S1714323
49	KOYINA KAMATI	S1714122
50	KRISHNA DURGI	S1714123
51	VINAYAK ASHOK MADIWALAR	S1714339
52	AMIT SUNAGAR	S1714031
53	KOMAL ANVEKAR	S1714119
54	NEELUFAR ZULFIKARALI BEFARI	S1714160
55	SHREYA GANAPATI KALASKAR	S1714278
56	SOUNDARYA BOKE	S1714306
57	MADIHA CHIKODI	S1714135
58	ROOPA PATIL	S1714236
59	RUPA PRAKASH PATIL	S1714238
60	AKSHATA JADHAV	S1714024
61	KOMAL NAGARAJ PATIL	S1714121
62	MANASI I CHANDGADKAR	S1714144
63	HARSHADA MANJUNATH REVANKAR	S1714086
64	RAMBHAU KESHAV BIDIKAR	S1714222
65	DEEPAK BHUTALI	S1714068
66	RAVI ASHOK ARER	S1714228
67	PRASHANT KULKARNI	S1715234
68	SACHIN RAMAPPA KALLANNAVAR	S1714244
69	LAXMIKANT KAMATAGI	S1714131
70	NAVEEN DUNDAPPA UJJINAKOPPA	S1714158
71	BALESH KALLAPPA HOLENNAVAR	S1714050
72	BABUSHA HANAMANT KHANAPUR	S1714049
73	PANKAJA GANAPATI DESAI	S1714179
74	SUJATA SHIVANAGOUДА PATIL	S1714314
75	MANJUSHREE NAYKAR	S1714150
76	PRABHAVATI KAPALI	S1714190
77	SANIYA YUSUF PIRJADE	S1714256
78	PRATIKSHA GAJANAN NAIK	S1714199
79	MEGHA MANJUNATH ARKASALI	S1714152
80	TEJA RAMESH BADLI	S1714327
81	AKSHATA SURESH ALLANNAVAR	S1714029
82	AKSHATA SANNABHAGANNA KARENNAVA	S1714025
83	POORNIMA PANCHAKSHARI KAVERI	S1714189
84	PRANALI P JADHAV	S1714194
85	MUNERABI MULLA	S1714154
86	RONIT MOTEKAR	S1714234
87	NAGARAJ LENKAPPA KOPPAD	S1714156
88	MANJUNATH HOLENNAVAR	S1714149
89	VINAYAK KOPARDE	S1714340
90	SHAHU SOMANNA NAKADI	S1714265
91	VISHAL GANGARAM PATIL	S1714347
92	VITHAL DILIP DALVI	S1714350
93	BASAVANT GOPAL SAMBREKAR	S1714051
94	PRAJWAL MANOHAR JADHAV	S1714191

Rsm

Principal
G. S. College, Belagavi

Coordinator
Belagavi

95	JOTIBA GUNJAPPA PATIL	S1714093
96	KIRAN CHAVAN	S1714113
97	KISAN MALLESHI RAGIPATIL	S1714117
98	JAINODDIN SHAIKH	S1714091
99	MAHAMMADSAB PANARI	S1714136
100	SANGAMESH BADALINGE	S1714254
101	SIDDAPPA BABU BADIGER	S1714291
102	NIKHIL BALLODI	S1714163
103	SACHIN ANAND KAMBLE	S1714242
104	GANESH BHUTNATH HOSURKAR	S1714080
105	KETAN HUNDRE	S1714112
106	SOORAJ HANCHINAL	S1714304
107	NIKITA DOLEKAR	S1714168
108	KISHORI PATIL	S1714118
109	SIMRAN NELSON CONSALVES	S1714294
110	AMRUTA HAIBATTI	S1714035
111	NEHA SOMAI	S1714162
112	RADHIKA MAHADEV GOJEKAR	S1714210
113	KOMAL KANBARKAR	S1714120
114	KIRTI MAHESH JADHAV	S1714116
115	NIKITA LAXMAN PATIL	S1714169
116	SONALI D PATIL	S1714301
117	PRAVEEN CHANDRAYYA PUJER	S1714201
118	SHRAVANKUMAR B SANADI	S1714276
119	MALLIKARJUN HONNAKKANAVAR	S1714143
120	VEERABHADRA S JOTI	S1714335
121	SOURABHA S PATIL	S1714311
122	SOURABH BEDAKIHAL	S1714308
123	YALLAPPA KARENNAVAR	S1714355
124	DARSHAN RAMAKRISHANA ITAGI	S1714061
125	PRANALI PATIL	S1714196
126	NIKITA PARASHARAM KESARKAR	S1714170
127	ANKITA PARASHARAM KESARKAR	S1714038
128	ROHAN SUNIL LAD	S1714233
129	SANDEEP BALASAHEB KOKITKAR	S1714253
130	RAHUL RAVIKUMAR JOSHI	S1714214
131	AMRUTA BAILUR	S1714034
132	AKSHATHA ASHOK CHOUKA	S1714021
133	KEERTI RAMESH APARAJ	S1714111
134	JYOTI DHARWAD	S1714096
135	SHWETA MALANNAVAR	S1714287
136	PREMA PATIL	S1714202
137	PALLAVI PADEDAR	S1716865
138	SONU DALPATSINGH RAJPUROHIT	S1714303
139	OMKAR BISTAPPA HEREKAR	S1714175
140	AISHWARYADEVI V DESHPANDE	S1731402
CBZ		
141	NIKITA MOHAN KESARKAR	S1714845
142	AISHWARYA GIRITIMMANNAVAR	S1727001
143	SOUNDARYA R GUDMETI	S1714307

10/10 Co-ordinator
College, Belagavi

Principal
G. S. Sc. College, Belagavi

144	KIRAN VASANT NAREGAVI	S1714115
145	VAISHNAVI V KUDTARKAR	S1714349
146	SHRUTI PATIL	S1714284
147	DANESHWARI DUNDAGE	S1714060
148	KRUTIKA MAHESH SHIRODKAR	S1714125
149	DISHA BARGAONKAR	S1714075
150	SONALI CHOPADE	S1714300
151	KAJAL LAXMAN BELAGUNDKAR	S1714104
152	PRANALI GORAL	S1714193
153	MANSI MANJUNATH ANVEKAR	S1714145
154	RAKSHITA DESHPANDE	S1714220
155	AKASH TEJWANI	S1714018
156	RAGHAVENDRA REVANKAR	S1714212
157	PUNDALIK NAGNOOR	S1714206
158	SHRIVATSA RAJENDRA HARAGAPUR	S1714280
159	SHUBHAM BASAVARAJ MULAGUND	S1714286
160	SACHIN S SHET	S1714245
161	ROSHANI PATIL	S1714237
162	SOUMYA HANABARATTI	S1714305
163	KAJAL BHAIRU PATIL	S1714101
164	SOURABH GUJNIKAR	S1714309
165	KAJAL K KAVILKAR	S1714103
166	SANJANA PATIL	S1714257
167	PRATIKSHA BADWANACHE	S1714198
168	OMKAR KRISHNA YALLURKAR	S1714176
169	LEENA KADAM	S1714132
170	RAMAPPA MARUTI BOMBRI	S1714221
171	GANRAJ ANGOLKAR	S1714083
172	POOJA VEERAKANT DIBBI	S1714186
173	NEHA JOTIBA RAUT	S1714227
174	SNEHAL S RAIBAGKAR	S1714296
175	VISHALAXMI BALAPPA KARADIGUDDI	S1714348
176	SHWETA SAHADEV KOLKAR	S1714289
177	SHWETA NAVALAI	S1714288
178	MADHU VASANT PADALALE	S1714134
179	NAAZ RIYAZKHAN PATHAN	S1714155
180	BHAGYASHREE VIRUPAXI VIJAPURE	S1714053
181	SHIVANI UMESH SOMANACHE	S1714274
182	ANURADHA A JADHAV	S1714039
183	SUSMITA PUNDALIK FAGARE	S1714324
184	RUTIK ANAND UDAKEKAR	S1714239
185	APURVA A BHATKANDE	S1714040
186	KAUSTUBH BIDARBHAVIKAR	S1714109
187	VIRENDRA KHANDERA0 DESAI	S1714344
188	SUMIT PARASHARAM MELAGE	S1714317
189	VRUSHABH KUMBHAR	S1714899
190	SOURABH PATIL	S1714310
191	KARTIK PRATAP DESAI	S1714622
192	AKHIL ASHOK DESAI	S1714019
193	AKASH NINGAPPA GURAV	S1714017

194	AKASH ASHOK PATIL	S1714013
195	NANDKUMAR SUHAS PATIL	S1714157
196	SHRADHA BALAKRISHNA GAVALKAR	S1714275
197	SAVITA DANYANESHWAR SUTAR	S1714262
198	DAYA TUKARAM SUTAR	S1714064
199	AISHWARYA PEJOLLI	S1714008
200	SUKANYA S SHIROLKAR	S1714316
201	SHIVALEELA SHIVAPPA ULLEGADDI	S1714268
202	RANI MADIWALEPPA NANDIHALLI	S1714225
203	MAHESHWARI SHIVANAYKAR	S1714140
204	POOJA KUDURI	S1714184
205	AISHWARYA VINOD DESHPANDE	S1714010
206	DEEPA BASAPPA HANCHINAMANI	S1714066
207	AKHILA KONNUR	S1714020
208	RAJASHREE I HITTALAMANI	S1714215
209	LAVANYA DUNDAYYA HIREMATH	S1714130
210	SANTOSH BHAJANTRI	S1714260
211	PRASAD HAWALDAR	S1714197
212	GOUSPAK MANSOORAHMAD BANKAPUR	S1714087
213	SAIKUMAR GUTTI	S1714247
214	SHRINIDHI PURUSHOTTAM HOSUR	S1714279
215	RAMESH KORI	S1714223
216	KARISHIDDA KARIGAR	S1714107
217	AISHWARYA RAVI KALLUR	S1714009
218	DONAR BHUMIKA ASHOK	S1714078
219	MANIK ADRUSH KAGGODI	S1714147
220	GANGANAGOUDA GIDAGERI	S1714082
221	MANJUNATH B ITNAL	S1713680
CZCS		
222	BABAJI DESAI	S1714046
223	GUNDU MARAKAL	S1714085
224	RACHANA APPUGOL	S1714208
PMG		
225	SMITA BELGAONKAR	S1714295
226	RENUKA PRAKASH PATIL	S1714230
227	SUNITA MOTIRAM BASARKATTI	S1714320
228	DHARMAJI GAONKAR	S1714074
229	ARJUN GAONKAR	S1714041
230	VAISHNAVI M DESHPANDE	S1714333
231	ROHAN NARAYAN DONGARE	S1714232
232	VISHAKHA K KATTI	S1714345
233	MAHESH PATIL	S1714138
234	DEEPA RAMESH BELLAD	S1714067
235	RAJASHREE SAKREPPANAVAR	S1714216
236	PRIYANKA SANGOLLI	S1714204
237	NAVEENA BASAPPA CHIKKARADDI	S1714159
238	SAIPRASAD N SAWANT	S1714248
239	DNYANESHWAR PATIL	S1714076
240	R SHRIKRISHNA	S1714207
241	SANKET SANJAY LONDHE	S1714259

242	SUSHMA MUDAKAVI	S1714322
243	RAMESH LAXMAN CHOURI	S1714224
CBG		
244	JYOTI MAHADEV BASAPURE	S1714098
245	VAISHALI HARGUDE	S1714332
246	SIDDHI PRAMOD GHODAKE	S1714293
247	AISHWARYA MAHENDRA PATIL	S1714005
248	SHIVALEELA GURUNATH NAYIK	S1714267
249	URMILA ANGOLKAR	S1714330
250	ANKITA CHOUGULE	S1714037
251	SHRIYA GANGADHAR BETAGERI	S1714281
252	SANKALP SADEKAR	S1714258
253	GAIKWAD GRACE EMMANUEL	S1714079
254	DARSHAN S BAKHEDI	S1714062
255	SOMANATH S TARIHAL	S1714298
256	YANKACCHI SACHIN LAXMAN	S1714354
257	AKASH KANBARKAR	S1714014
258	BABU SHIVANAGOUDA PATIL	S1714048
259	HIRVE MITHILESH DHARMAENDRA	S1714087
260	ARJUN RAJU GHODAGERI	S1714042
261	AISHWARYA MADAKAVI	S1714007
262	JUNEEED KHAN JAMADAR	S1714094
263	VINAYAK PATIL	S1714341
CGCS		
264	NIKHITA B DODAMANI	S1714165
265	RUTUJA SHANKAR KHURPE	S1714240
266	SHIVANAND SHANKAR DALAWAYI	S1714272
267	VIGHNESH RAGHUNATH SHINDE	S1714337
268	MANGESH NARAYAN PAWAR	S1714146
269	AJAYKUMAR GONI	S1714011
270	AKSHAY PATIL	S1714030
B.Sc II GEOLOGY		
271	SUDHA A L	S1815168
272	PARVATI HANAMAGOUDAR	S1814996
273	PALLAVI RAMACHANDRA KADAKOL	S1814990
274	SIVARANJANI R BANI	S1815147
275	RAHUL BHIKAJI KUMBHAR	S1815047
276	SALONI HUBBALKAR	S1815097
277	RAMESH L SINGAMMANAVAR	S1815057
278	VAIBHAV PATIL	S1815196
279	PREETI R NANDANI	S1815033
280	UTKARSH DESAI	S1815194
281	VIJAY SURESH JAMKHANDI	S1815214
282	JAGANNATH SHANKAR MAGADUM	S1814910
283	SAKSHI VIJAY SAMJI	S1815096
284	ADYA VISHWAJIT SANKPAL	S1815107
285	RAHISTA MULLA	S1814044
286	PRADNYA SUDHAKAR MIRAIE	S1814953
287	OMKAR P MANNOLKAR	S1814983
288	OMKAR N ANAVEKAR	S1814982

IQAC Co-ordinator
College, Belagavi

Principal
S. Sc. College, Belagavi

289	ANUSHIKA KALGHATGI	S1814853
290	VAIBHAV PANNOSHI	S1815195
291	JAYAMALA V KAMBLE	S1814913
292	HARDIK UMANATH BANDODKAR	S1814904
293	RITIKA MALGE	S1815065
294	PRATHMESH BHATKANDE	S1815023
295	DEEPAK BALU MURGOD	S1814887
296	SACHIN PAWAR	S1815079
297	DARSHAN CHITNIS	S1814884
298	URMILA PARMAR	S1815193
299	CHANGUNA D KADAM	S1814881
300	DHANSHRI LOHAR	S1814891
301	PRAGATI SUTAR	S1815014
302	MOHIT MOHAN PATIL	S1814955
303	VINAYAK ANIL GAYAKWAD	S1815218
304	VISHWANATH A KORWAAR	S1815225
305	SAVU NANU GAVALI	S1815116
306	POOJA G	S1815005
307	POOJA KOLWALKAR	S1815008
308	AKSHOBHYA B H	S1814836
309	APPASAHEB KHOT	S1814854
310	ANAND S WALIMARAD	S1814844
311	RAHUL LOGAVI	S1815048
312	SIDDHARTH AJAY MUTAKEKAR	S1815143
313	BALAKRISHNA MALLAPPA LAXMANNAVAR	S1814866
314	AKSHAY DALAVI	S1814833
315	KOMAL JITENDER KADAM	S1814925
316	SIMRAN DEEPAK FASALKAR	S1815145
317	PRAJYOT SHETTAR	S1714192
318	AISHWARYA BASAVARAJ KADAM	S1814818
319	MAYURI YADAV	S1814949
320	AISHWARAY S PEDANEKAR	S1814817
321	BHARMA HANBAR	S1814876
322	PRASAD SUNDAR PAWADI	S1815019
323	YASHRAJ PATIL	S1815233
324	VISHWAJEET DESAI	S1815224
325	VARUN S NERLIKAR	S1815203
326	ROHIT G SHETTY	S1815068
327	AMEYA DEEPAK KULKARNI	S1814838
328	SPANDANA SUNIL SHINDE	S1815166
329	KEERTHI R NARASINGNAVAR	S1814922
330	AISHWARYA PATIL	S1814816
B.Sc I GEOLOGY		
331	ANIKET K CHOUGULE	S1914842
332	SHRUTI KOOGI	S1915150
333	SHREYA KULKARNI	S1915142
334	TRIVEDA S BHARAMANIKAR	S1915214
335	ROHAN D BHANGENNAVAR	S1915086
336	ADAVAYYA SHIVAYYA PUJARI	S1914809
337	TRUPTI BHOSALE	S1915215

338	VARSHA VISHNU KUMBHAR	S1915230
339	AISHWARAYA R KUGAJI	S1914815
340	SHRADDHA S DHULAJI	S1915139
341	RITIK R SHET	S1915083
342	PRALHAD N NAIK	S1915041
343	UMESH N SAMBHAJI	S1915216
344	JAYANT P MOTARACHE	S1914909
345	ROHISTEN D'SOUZA	S1915090
346	KIRAN J NAIK	S1914932
347	PRAMOD BHOSALE	S1915042
348	KOMAL N PATIL	S1914939
349	SAGAR B ROTTI	S1915104
350	TEJARAJ S PATIL	S1915213
351	SHRAVANI YADAV	S1915141
352	ABHSHEK VASUDEV	S1914806
353	SAMRUDDHI SUBESH AKKOLE	S1915119
354	PRAVEEN ITI	S1915052
355	PRIYANKA SURESH BELAVI	S1915062
356	MEGHA KULKARNI	S1914972
357	SANTOSH RAJPUT	S1915129
358	VAIBHAV SANTOSH KALE	S1915220
359	MEDHA G PHADAKE	S1914970
360	UMESH S MUTAGEKAR	S1915218
361	KEDAR RAMKRISHANA PATIL	S1914926
362	TEJAS PATIL	S1915210
363	BABALAL G BUDDANNAVAR	S1914861
364	MUTTURAJ K MALALI	S1914984
365	SAKSHI ARUN LAGARE	S1915111
366	SAMEER KULKARNI	S1915115
367	PAVANKUMAR LOKARI	S1915030
368	SAKSHI G CHOUGULE	S1915112
369	NAGARAJ KARIDIGUDDI	S1914987
370	PRANAV PASCHAPUR	S1915044
371	AMIT D N	S1914833
372	ABHILASH A DIVATAGI	S1914802
373	GURAV DIPA YALLAPA	S1914903
374	ADITI KEDARI MAJAGAONKAR	S1914810
375	SUNITA H B PATIL	S1915192
376	VAISHNAVI BADMANJI	S1915224
377	OMKAR S TASHILDAR	S1915020
378	PRAJAKTA P SAMANT	S1915036
379	UMESH P DHAGE	S1915217
380	BASTWAD PRASANN P	S1914865
381	ANKLESH M ANGOL	S1914848
382	NIKITA MANGESH PIRANKAR	S1915005
383	PAWAN KUMAR P SAMBHAJI	S1915031
384	KOMAL B VHANDEKAR	S1914936
385	PRABHAVATI V KURANGI	S1915034
386	RUSHIKA RAJU CHOUGULE	S1915095
387	SUSHMITA SHIVANAPPA NAIKAR	S1915203

388	MANOJ PARASHURAM KOLKAR	S1914968
389	NIKHIL DESAI	S1915000
390	PREETI SANTOSH GAWADE	S1915054
391	SOUMYA S GIDAGANTI	S1915176
392	ALISAB ANVAR NADAF	S1914831
393	RAVINA MODAGEKAR	S1915079
394	MIRAKBARKHAN I INAMDAR	S1914975
395	PALLAVI S KULKARNI	S1915026
396	ANJALI SANJAY GOTUR	S1914846
397	AIMAN M SHAHPURI	S1914813
398	VIKRAM M CHOUGULE	S1915234
399	MAHENDRA MARUTI SAWANT	S1914957
400	NAGARJUN PATIL	S1914988
BCA III		
401	Ganapati patil	M1710216
402	Nikhil Sutar	M1711063
403	Anjali Patil	M1710205
404	Kori Tejaswini	M1710226
405	Suraj Sutar	M1710271
406	Aniket Shahapurkar	M1710204
407	Namdev Vasulkar	M1710233
408	Chetan Mali	M1710212
409	Shubham Suguni	M1710264
410	Amruta Vaze	M1710202
411	Prajakta Bijapure	M1710245
412	Bhavika Chandgadkar	M1710211
413	Sunita Desai	M1710269
414	Prabha Patil	M1710243
415	Pooja Gurav	M1710242
416	Kevin Lobo	M1710222
417	Vartika Hajeri	M1710280
418	Deepali Kumbhar	M1710214
419	Sonal Patil	M1710268
420	Manali Patil	M1710229
421	Anam Mulla	M1710203
422	Nisha Kamble	M1710237
423	Sheetal Gawas	M1710260
424	Ashwini Pashchapur	M1710207
425	Shruti Bastwad	M1710263
426	Swati Kurubar	M1710276
427	Sushmita Yaraddi	M1710275
428	Veena Karaveeranavar	M1710282
429	Daneshwari Badiger	M1710213
430	Nanda Hattikatti	M1710234
431	Rakshita Patil	M1710251
432	Pratibha Kamble	M1710247
433	Atmaram Karambalkar	M1710208

434	Sushilkumar Patil	M1710272
435	Wasimakram Habib	M1710286
436	Rahul Madihalli	M1710250
437	Vinayak Kamble	M1710283
438	Neha Bhatkande	M1710236
439	Megha Bhekane	M1710230
440	Rama Purandhare	M1710252
441	Pallavi Badavannavar	M1710239
M.Sc - ORGANIC CHEMISTRY		
442	AISHWARYA KHOT	CH191201
443	AJIT KHOT	CH191202
444	ANJALI GAJANAN HISHOBKAR	CH191203
445	ARATI CHAVAN	CH191204
446	ARATI DHAKALU GAVI	CH191205
447	GAYATRI BASAVARAJ MATHAD	CH191206
448	GAYATRI MAJUKAR	CH191207
449	GURAV POOJA BHARMANI	CH191208
450	IBTIJAM ABBASALI MULLA	CH191209
451	KEDARI RAJENDRA NINGOJI	CH191210
452	MEGHA A GOTUR	CH191211
453	MITALI KULKARNI	CH191212
454	MRUNALI DADASAHEB CHENDAKE	CH191213
455	NIKITA GAJANAN JADHAV	CH191214
456	POONAM KELAGINAMANI	CH191215
457	PRAKRUTI MAHADEV AIGALI	CH191216
458	PRASAD PRAMOD SHAHAPURKAR	CH191217
459	PRAVEENKUMAR RAIKA	CH191219
460	RENUKA SHIVAJI PATIL	CH191220
461	SACHIN V SUVARNKAR	CH191221
462	SAVITA MALLIKARJUN GUDADAVAR	CH191222
463	SHINGE SACHIN TAMANNA	CH191223
464	SNEHA RAMESH GURAV	CH191224
465	SNEHAL KISHOR POTE	CH191225
466	SNEHAL MARUTI DUKARE	CH191226
467	SONAM RAJU PATIL	CH191227
468	SOURABH GURAV	CH191228
469	THORAT SHITAL VINAYAK	CH191229
470	UNKALKAR APURVA ARUN	CH191230
471	VAISHALI ADAKE	CH191231
M.Sc - BOTANY		
472	ACHAL ARUN MAGADUM	BT181201
473	ADARSH PUNDALIK	BT181202
474	AJAY SUTAR	BT181203
475	BHARATESH BORANNAVAR	BT181204
476	BHARGAVI DEVEGOUDA PATIL	BT181205
477	DEEPA KULKARNI	BT181206
478	DEEPA MURALIDHAR CHAVAHAN	BT181207
479	INDULEKHA VINAYAK MENSE	BT181208

480	JAMADAR SANIYA GULAB	BT181209
481	JOSHI PRIYANKA DATTATRAY	BT181210
482	KANCHANA RAMANAGOUDA PATIL	BT181211
483	KAVITA RAJU TALAWAR	BT181212
484	LALITA MALLIKARJUN KURALI	BT181213
485	MAHALAXMI S. PATIL	BT181214
486	NIKITA BOMMANAVAR	BT181215
487	RAVINA VERNEKAR	BT181217
488	SAHANA D SUNKAD	BT181218
489	SHRUTI MADAGUNAKI	BT181219
490	SHWETA CHITTARAGI	BT181220
491	SIDDHALING SHIRADONI	BT181221
492	ASMITA MAIGUR	BT191201
493	RASHMI BADIGER	BT191202
494	SHILPA RAVINDRA JANGATYAL	BT191203
495	SHREYA BANAKARI	BT191204
496	PURNIMA NAYAK	BT191205
497	ROHINI NILAJKAR	BT191206
498	KASHAMMA UPPIN	BT191207
499	GAYATRI PATIL	BT191208
500	SNEHA BHEEMARAO PATTAR	BT191209
501	SEEMA VIRUPAKSHI BADIGER	BT191210
502	SUSHMA ANANTRAO DESHPANDE	BT191211
503	NISHITA BASAVARAJ ADHALLI	BT191212
504	RAVIKUMAR B GASTI	BT191213
505	PREETIYA NETALKAR	BT191214
506	AMRUTA S CHOUGULE	BT191215
507	PRIYANKA NATEEKAR	BT191216
508	SUMAN SIDAGOUDA AKKATANGERHAL	BT191217
509	SHIVABAI PUJAR	BT191218
510	SOUMYA CHAVADAPPANAVAR	BT191219


 IQAG Co-ordinator
 GSS College, Belagavi


 Principal
 G. S. So. College, Belagavi